



Learning@EFI



Fiery Products Course Catalog

On-demand, 24/7, anytime, anywhere



On-demand, 24/7, anywhere, anytime

EFI™ (www.efi.com) is a worldwide provider of products, technology, and services leading the transformation of analog to digital imaging. EFI's powerful integrated product portfolio includes Fiery print servers, software-intensive, sophisticated digital front ends that drive a full range of color and black-and-white digital print engines.

Established in 2010, Fiery Global University, now Learning@EFI, offers three unique learning platforms that host a wide array of learning solutions developed by EFI subject-matter experts. Our learning solutions are tailored to address the needs of print providers and channel partners from beginning learners all the way to advanced users.

3 Learning Platforms



On-demand

Our **On-demand** 24/7, anywhere, anytime platform allows learners to gain access to our training and extensive curriculum online via computer, tablet, and/or mobile device. On-demand learning solutions include eLearning courses, Express videos, Simulation learning, How-to guides, Webinars, and Certification programs.



Virtual classroom

Our **Virtual classroom** platform allows both learners and instructors around the world to participate in live sessions, courses, and seminars. Guided by our expert instructors, learners can engage and collaborate with peers while participating in hands-on, interactive learning experience.



Instructor-led

Our **Instructor-led** classroom platform, available to those enrolled in our Fiery Expert Certification program, is led by our expert certified instructors and geared towards learners serious about mastering the advanced Fiery toolsets.

Questions?



learning.efi.com



learning@efi.com

TABLE OF CONTENTS

WELCOME	4	Podcasts	68
ABOUT EFI™	6	Simulation learning	71
EXPLORE BY	9	Virtual classroom/Webinars	74
I. AREA OF INTEREST	10	III. LEARNING PATH	78
SETUP & CONFIGURATION	12	PRINT SERVICE PROVIDERS	79
System setup	13	Press/printer operator	80
Maintenance	13	Prepress operator	82
Fiery paper catalog	14	Plant production manager	85
Client workstation	14	Graphic designer	87
JOB MANAGEMENT	16	Office user	89
Job submission & management	17	FIERY CHANNELS	91
Job imposition	18	Analyst	91
Variable data printing	19	Sales Rep	95
Job troubleshooting	20	IV. PRODUCT	100
Complex job preparation	21	Fiery® Central	102
COLOR MANAGEMENT	24	Fiery Color Profiler Suite	103
Color setup	25	Fiery Command Workstation® 5	104
Color theory	26	Fiery Command Workstation® 6	105
Color operations & maintenance	27	Fiery Compose	106
Create and manage profiles	28	Fiery Go	106
Late stage color editing	29	Fiery Graphic Arts	
WORKFLOW AUTOMATION	30	Package, Premium Edition	107
Automated workflow preparation	31	Fiery Hot Folders &	
Basic automated workflows	32	Virtual Printers	108
Advanced automated workflows	33	Fiery Impose	109
INTEGRATION	34	Fiery JobFlow™	110
Business-wide integration	35	Fiery JobMaster™	111
SHOP OPERATIONS	36	Fiery Navigator™	113
Unified job management	37	Fiery Productivity Package	114
Remote print queue management	38	Fiery Spot-On™	115
Shop management & visibility	39	Fiery Variable Data	
II. LEARNING SOLUTION	40	Printing Solutions	116
Fiery certification programs	42	Fiery VUE	117
eLearning	44		
Express videos	50		
Instructor-led training	67		

FIERY PRODUCTS

Welcome

Your time is valuable. That's why we offer a wide variety of learning formats and solutions for your convenience.



Take advantage of Learning@EFI's unique learning platform. Whether you want to learn new skills or simply get credentialed for skills you already have, our learning options will give you a competitive advantage.

With our customized approach to learning, Learning@EFI is an unrivaled learning solution designed specifically for simple and easy access. The Learning@EFI platform empowers you to learn the latest Fiery features and functionality.

- Tracye Laun, PhD.

Director, Global Education Services

✉ tracye.laun@efi.com

✉ learning@efi.com

in <https://www.linkedin.com/in/tracyelaun>

Our Training Approach

- On-demand, 24/7 anytime, anywhere learning platform
- World-class training
- Aligned with the way you work and learn today
- Multiple, customized learning solutions and learning paths
- Real-world application
- Virtual, hands-on global classrooms
- Award-winning certifications programs
- Seasoned, expert trainers



Jessie Kijowski
Mountain Star Capital

"We have improved our skills significantly."
- *Tristan Redmond*,
The UPS Store

"I would 100% recommend Fiery Expert Certification to anyone."
- *Dave Choura*,
Comdoc

"I have been able to eliminate redundant job setups, cutting job setup time by as much as two-thirds."
- *George Ortola*, Placer County print shop

"The trainers were phenomenal."
- *Antony Browy*,
Zeno Solutions

"I would highly recommend this training to any Fiery DFE owners."
- *Dennis Schwindel*,
Owner, Schwindel Graphics



ABOUT EFI™

Electronics For Imaging, with headquarters in Silicon Valley, California and offices around the world, is leading the transformation from analog to digital imaging. Driven by our entrepreneurial spirit, we invent and deliver next-generation technologies for the manufacturing of signage, packaging, textiles, ceramic tiles, and personalized documents for businesses globally. We help increase our customers' business success with a scalable portfolio of products, technology and services. Customers use our integrated products to improve productivity, cut costs, and optimize performance on every job from creation to print. As a result, customers extend their market reach, differentiate themselves from the competition, drive up profits, and increase their clients' satisfaction.

EFI's award-winning, integrated product portfolio consists of:

- Powerful digital front ends
- Production workflow software and color management tools
- Superwide and wide-format, label, textile, and ceramic inkjet presses and inks
- eCommerce, web-to-print, and cross-media marketing software
- Comprehensive suites of productivity software for business automation that transform and streamline the entire production process
- Mobile and cloud printing products

FIERY®

Fiery print servers are feature-rich digital front ends (DFEs) that drive a full range of color and black-and-white digital print engines. The world's fastest DFE, Fiery servers and workflow solutions provide industry-leading performance, color accuracy, usability, and integration that improve the quality and efficiency of digital printing. Fiery technology and color management workflow drive toner cut sheet and inkjet printers –ranging from office-level multi-function printers to superwide inkjet, high-speed inkjet, and high-volume commercial digital presses.



INKJET

EFI digital inkjet technology is leading the way with over one third of the world's high-end wide-format printers. Our robust portfolio of inkjet printers and presses include industry-leading LED, superwide, wide-format, soft signage, label, and specialty application printers and inks; digital ceramic tile decorating systems and inks; and digital printing plus pre- and post-treatment equipment for the worldwide textile market.



PRODUCTIVITY SOFTWARE

Productivity Software provides customers with mission-critical capabilities and total operational visibility. The EFI Productivity Suites address the most pressing automation and efficiency needs with complete offerings that use best-in-class segment-based MIS/ERP systems, value-added components, and end-to-end certified workflows designed for real business needs. They offer a range of solutions for quick print, mid-market, enterprise commercial print, corrugated packaging, packaging, and publishing markets.



Explore By

I. Areas of Interest

The needs of the digital printing industry are as diverse as the people who work in it. Choose your learning from the topics that most reflect your daily tasks and responsibilities.

II. Learning Solutions

Training comes in many different styles and methods. Whether you prefer eLearning or videos, Instructor-led or How-to guides, you can find the type of learning solution that helps you learn the best.

III. Learning Paths

From press operator to sales manager, different roles and responsibilities require unique knowledge. Customize your learning by creating a learning path based on your role in the print industry.

IV. Products

With the wide variety of EFI Fiery products, you may have a lot of knowledge on one, but not so much on another. Customizing your education by product lets you focus on learning the products that matter to you most.



Learn By I. AREA OF INTEREST

Learning organized into areas of interest can help you determine the curriculum best suited to your daily tasks or help you expand your Fiery knowledge in different areas. You can select areas more related to the Fiery server hardware such as setup and configuration. You can learn more about job management or shop analytics. Color professionals may choose to advance their knowledge of profiling, color theory or overall color management. You will find the areas of interest logically organized with all of the associated learning solutions available for your selection.



SETUP &
CONFIGURATION

WORKFLOW
AUTOMATION

JOB
MANAGEMENT

INTEGRATION

COLOR
MANAGEMENT

SHOP
OPERATIONS



Setup & Configuration

As part of your Fiery system installation, it is recommended to customize the Fiery configuration settings to fit your business demands. Based on your environment (like Workgroup, Production, Graphic Arts or Transactional printing) some settings need to be activated while others deactivated to give maximum Fiery system performance.

If your users will submit jobs to the Fiery server using print drivers, it is necessary to install and configure to work with Windows and/or Mac OS. Based on your configuration, you may need to activate different licenses for Fiery options. Once your Fiery server is up and running, system backup is key to be able to restore the Fiery server in case a system issue occurs. Restoring the Fiery server from a backup will save hours versus a manual install and reconfiguration.



SYSTEM SETUP

- Access Fiery configure
- Configure the Fiery server
- Manage the Fiery Paper Catalog
- Manage user accounts

Learning Solutions:



eLearning

- Fiery-100 Configuring Fiery servers
- NEW** • Fiery-200 Fiery Command WorkStation 6
- Fiery-200 Fiery Command WorkStation 5.8
- Fiery-210 Fiery tools for job management



Simulation learning

- NEW** • Edit defaults for color management settings in Fiery Command WorkStation 6
- NEW** • Edit server defaults in Fiery Command WorkStation 6



Express videos

- NEW** • Edit server defaults in Fiery Command WorkStation 6
- NEW** • Fiery Command WorkStation 6 overview



How-to guides

- Job management workflow in Fiery Command WorkStation

MAINTENANCE

- Backup and restore a Fiery server
- Perform Fiery system maintenance

Learning Solutions:



eLearning

- Fiery-100 Configuring Fiery servers

FIERY PAPER CATALOG

- Manage the Fiery Paper Catalog

Learning Solutions:



eLearning

- Fiery-410 Digital media workflows



How-to guides

- Paper stock management with Fiery Paper Catalog

CLIENT WORKSTATION

- Activate Fiery option licenses
- Find drivers and utilities
- Install Macintosh print drivers
- Install Macintosh Fiery utilities
- Install Fiery Hot Folders
- Install Fiery JobFlow
- Install Windows print drivers
- Install Windows Fiery utilities

Learning Solutions:



eLearning

- FIERY-110 Print Connections and utilities
- FIERY-210 Fiery tools for job management



Job Management

Prepress and makeready tasks in the print shop can be a major challenge. Graphic designers may not prepare files in the correct way to optimize imposition, color management, and finishing or may not include all elements such as fonts in the job file.

These situations make it necessary to treat each print file individually. Some files may need to be checked or preflighted to avoid print errors and waste. Others need to be merged into one document, edited, and adjusted. Advanced finishing settings may be needed to produce high-value finished documents. Other jobs may need to be reprinted from an archive to satisfy short-term customer requirements. Finding the right settings to have your documents print correctly can be made easier with the right training. And learning how to automate many prepress and make-ready tasks increases your efficiency.

JOB SUBMISSION & MANAGEMENT

- Archive jobs
- Print with the Fiery Driver
- Connect Command WorkStation to a Fiery server
- Customize the Command WorkStation interface
- Filter jobs
- Manage jobs in Command WorkStation
- Perform advanced job management
- Submit jobs using Command WorkStation
- Use job properties

Learning Solutions:



eLearning

- NEW** • Fiery-200 Fiery Command WorkStation 6
- Fiery-200 Fiery Command WorkStation 5.8
- Fiery-210 Fiery tools for job management



How-to guides

- Job management workflow in Fiery Command WorkStation



Simulation learning

- NEW** • Filtered-view tabs



Express videos

- Creating filtered-view tabs
- NEW** • Edit server defaults in Fiery Command WorkStation 6
- NEW** • Fiery Command WorkStation 6 overview
- NEW** • In-line editing in Fiery Command WorkStation 6
- NEW** • Job search, filters and views in Fiery Command WorkStation 6



Webinars

- NEW** • Fiery Command WorkStation 6 - overview and best practice

JOB IMPOSITION

- Create a best fit layout*
- Create a booklet in Fiery Impose*
- Create a calendar*
- Create Fiery Impose templates*
- Use the booklet maker wizard
- Use Fiery VUE

**License(s) required: Fiery Impose*

Learning Solutions:



eLearning

- Fiery-400 Booklet making & imposition
- Fiery-401 Printing business cards
- Fiery-402 Printing calendars



Express videos Fiery Impose

- Create a best fit gangup layout
- Fiery automated workflows for business cards production
- Fiery Impose and compose overview
- Fiery Impose templates for booklet finishing
- Fiery Impose templates for business cards demonstration
- NEW** • Gangup automation by media size in Fiery Impose
- NEW** • Show media color in Fiery makeready solutions
- User defined finish size

Fiery VUE

- Fiery VUE Commercial



How-to guides

- NEW** • Auto page rotation in Fiery Impose
- NEW** • Gangup automation by media size in Fiery Impose
- Gangup finish-edge imposition
- Prepare and produce business documents with Fiery VUE
- Print a booklet from the driver
- Print a booklet with Fiery Impose
- Print a calendar booklet
- Print business cards
- Prepare gangup repeat jobs in seconds
- User defined workflow with Fiery Impose



Simulation learning

- Best Fit Gangup Repeat
- NEW** • Gangup automation by media size in Fiery Impose
- NEW** • Show media color in Fiery makeready solutions

VARIABLE DATA PRINTING

- Impose variable data jobs*
- Use Fiery FreeForm™

**License(s) required: Fiery Impose*

Learning Solutions:



eLearning

- Fiery-410 Digital media workflows
- Fiery-500 Understanding variable data printing
- Fiery-510 VDP with Fiery FreeForm
- Fiery-700 Advanced imposition and VDP



Webinars

- Ten ways that Fiery tools make VDP easy
- The business of VDP: How to get started and grow your profits
- Recipe for VDP: A primer for creating successful campaigns



How-to guides

- Prepare and print a personalized newsletter using Fiery FreeForm
- Prepare and produce personalized booklets
- Prepare and produce personalized postcards.

JOB TROUBLESHOOTING

- Create a job error report
- Use Control Bar Builder
License(s) required: Graphic Arts Package, Premium Edition or Productivity Package
- Use Fiery Postflight
License(s) required: Graphic Arts Package, Premium Edition or Productivity Package
- Use Fiery Preflight
License(s) required: Graphic Arts Package, Premium Edition

Learning Solutions:



eLearning

- Fiery-600 Graphic Arts Package, Premium Edition
- Fiery-610 PDF workflows



How-to guides

- Create a job error report
- Create custom control bars for color consistency and quality control
- Use prepress tools at the Fiery server to troubleshoot file issues



Simulation learning

- Fiery Job Error Report

COMPLEX JOB PREPARATION

- Add chapter starts
 - Apply advanced page numbering *
 - Combine pages
 - Create a new job
 - Create an NCR multi-part pad *
 - Create and edit tabs
 - Create bleed-edge tabs *
 - Edit with Enfocus PitStop
 - Image stamping in Fiery
- JobMaster*
 - Import scanned images in Fiery JobMaster*
 - Navigate and filter document pages
 - Page offset in Fiery JobMaster*
 - Preview media color
 - Remove page numbers or elements *
 - *

License(s) Required: Fiery Compose or Fiery JobMaster.

**These features are only available in JobMaster.*

Learning Solutions:



eLearning

- Fiery-420 Document composition

NEW • Fiery-800 Fiery JobMaster



Express videos

Fiery JobMaster

- Bleed-edge tabs
- Fiery JobMaster auto tab demonstration
- Image stamping in Fiery JobMaster
- Import scanned images in Fiery JobMaster
- Job duplication and numbering
- NCR form creation
- Page offset in Fiery JobMaster
- Quick page selection

NEW • Show media color in Fiery makeready solutions



How-to guides

- Apply advanced page numbering
- Apply image stamping with Fiery JobMaster
- Apply page offset on documents with Fiery JobMaster
- Apply unique ticket numbers
- Automatic tab creation
- Convert pages to grayscale
- Import scanned images with Fiery JobMaster
- Prepare complex long documents for print
- Prepare long jobs quickly
- Produce documents with bleed-edge tabs
- Produce documents with two sets of tabs
- Produce jobs with different finishing requirements
- Produce NCR forms with Fiery JobMaster
- Produce notepads
- Produce unique numbered tickets with Fiery JobMaster



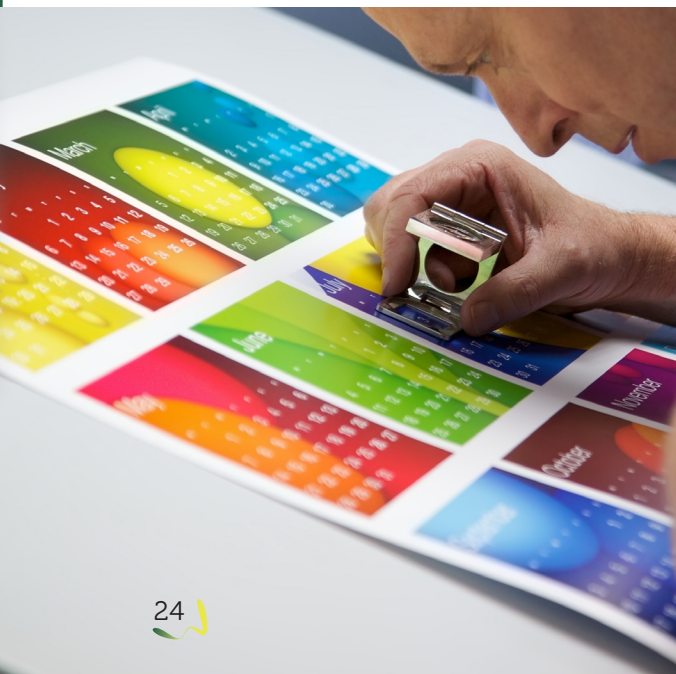
Webinars

- Use powerful Enfocus PitStop edit PDF tools to quickly make print ready files
- NEW** • Fiery Command WorkStation 6: new features in Fiery makeready solutions



Simulation learning

- NEW** • Image stamping in Fiery JobMaster
- NEW** • Import scanned images in Fiery JobMaster
- NEW** • Page offset in Fiery JobMaster
- NEW** • Show media color in Fiery makeready solutions



Color Management

One of the most challenging areas in digital printing is color and output quality. Printed colors may not match the colors on your screen. Brand colors in logos or other graphic elements may not match corporate color standards. You may produce output that doesn't match a reference proof, or doesn't match a previously printed document.

You don't have to be a color guru to achieve high output quality. Color management refers to the process of using a set of color tools to achieve the best possible color output quality from your printers. These tools can achieve consistent color reproduction and bring higher levels of color accuracy and consistency. Color management can help match your output to other printing devices or industry printing standards. Good color management gives you the ability to make last minute corrections on images and get the best color output quality based on your media specifications.

COLOR SETUP

- Configure color workflows
- Configure Fiery server color defaults
- Understand native application color workflow

Learning Solutions:



eLearning

- NEW** • Fiery-101 Color management fundamentals
- Fiery-310 Color workflow and setup



Express videos

- NEW** • Color settings in Fiery Command WorkStation 6
- How to enable black point compensation
- How to enable PDFX intent
- How to use embedded profiles on the Fiery server
- Optimizing image color
- Optimizing image detail
- Optimizing quality of vector graphics
- Print grayscale pages using black
- Rendering intent



Webinars

- Best practices for producing outstanding image quality results
- NEW** • Fiery Command WorkStation 6 - configuring color settings and best practices



Simulation learning

- NEW** • Color settings in Fiery Command WorkStation 6
- NEW** • Edit defaults for color management settings in Fiery Command WorkStation 6

COLOR THEORY

- Learn color management fundamentals

Learning Solutions:



eLearning

- Fiery-310 Color workflow and setup



Webinars

- 3 key steps to getting the right color



Express videos

- Basics of color management
- Key steps for successful color management
- Fiery color flowchart 2016
- Tonality and color demystified

COLOR OPERATIONS & MAINTENANCE

- Calibrating the Fiery server
- Create a substitute color*
- Manage custom spot colors*
- Optimize spot colors*
- Verify and troubleshoot profiles*

**License Required: Fiery Spot-On or Fiery Color Profiler Suite*

Learning Solutions:



eLearning

- Fiery-320 Creating spot colors
- Fiery-330 Spot color accuracy
- Fiery-340 Fiery color profiling



Express videos

- Challenges with printing spot colors
- Create a custom output profile with Express Profiler
- How spot colors are produced
- Importance of calibrating a digital print system



How-to guides

- Calibrate printer with EFI ES-2000 spectrophotometer
- Capture spot colors and reproduce them accurately
- Create output profiles with Express Profiler



Webinars

- The ABCs of producing the best match for spot colors
- NEW** • G7 calibration with Fiery Color Profiler Suite

CREATE AND MANAGE PROFILES

- Create a monitor profile
- Create linearization and ICC media profile
- Match output on multiple printers
- Match output to an industry standard
- Perform G7 calibration
- Verify the accuracy of color profiles

License(s) Required: Color Profiler Suite (Profiling and calibration), Graphic Arts Package Premium Edition

Learning Solutions:



eLearning

- Fiery-340 Color profiling
- Fiery-900 Advanced color profiling



Express videos

- Color Profiler Suite product overview
- High GCR profiles with Color Profiler Suite
- Match press standards with Fiery servers
- What is G7 calibration?



Simulation learning

- Simulate the output of another printer for proofing
- Print or proof in accordance with industry standards
- Create a monitor profile
- NEW** • Verify print accuracy to a standard



Webinars

- Best practices for matching industry color standards



How-to guides

- Create a Fiery G7 calibration and profile
- Create custom control bars for color consistency and quality control
- Create output profiles with Express Profiler
- Achieve accurate and consistent color with printer profiles

LATE STAGE COLOR EDITING

- Adjust color with ImageViewer curves
- Enhance photographic image quality
- Apply in-line photographic enhancements

License(s) required: Graphic Arts Package, Premium Edition or Productivity Package

Learning Solutions:



eLearning

- Fiery-600 Graphic Arts Package, Premium Edition



Webinars

- Best practices for troubleshooting print quality problems



How-to guides

- Enhance image quality of pictures with Fiery Image Enhance Visual Editor



Workflow Automation

Reducing the number of touch points in your day-to-day print workflows increase productivity and simplify production processes. Workflow automation can provide advanced job properties, corrections, impositions, and finishing settings for different file types. This allows your jobs to be printed correctly with less manual interaction, allowing inexperienced users to produce complex jobs and avoid printing errors.



AUTOMATED WORKFLOW PREPARATION

- Apply advanced Hot Folder filters
- Auto page rotation in Fiery Impose
- Create and modify Fiery Hot Folders
- Create and modify Fiery Preflight templates
- Create and modify Fiery presets
- Create and modify Fiery Virtual Printers
- Create and modify Image Enhance Visual Editor templates
- Create and modify imposition templates
- Gangup automation by media size

License(s) Required: Hot Folders and Virtual Printers, Fiery Graphic Arts Package Premium Edition, or Fiery Impose

Learning Solutions:



eLearning

- Fiery-220 Creating automated workflows
- Fiery-600 Graphic Arts Package, Premium Edition



Simulation learning

- NEW** • Gangup automation by media size in Fiery Impose



Express videos

- NEW** • Gangup automation by media size in Fiery Impose



How-to guides

- NEW** • Auto page rotation in Fiery Impose
- Automate Job submission with Fiery tools
- Gangup automation by media size in Fiery Impose
- Merge JPEG files and print a photo booklet using Hot Folders

BASIC AUTOMATED WORKFLOWS

- Submit jobs via Fiery Hot Folders
- Submit jobs via Fiery Virtual Printers

License(s) required: Hot Folders and Virtual Printers

Learning Solutions:



eLearning

- Fiery-220 Creating automated workflows

ADVANCED AUTOMATED WORKFLOWS

- Approve jobs with Fiery JobFlow*
- Configure Fiery JobFlow PC
- Correct and preflight jobs with Enfocus PitStop*
- Create a rules-based workflow with Fiery JobFlow*
- Create and modify a Fiery JobFlow workflow
- Define Fiery JobFlow Locations
- Define Fiery JobFlow workflow rules
- Implement a PDF workflow
- Import JobFlow workflows
- Process jobs with advanced scripting*
- Submit jobs to Fiery JobFlow workflows

Licenses required: JobFlow or JobFlow Base. To use JobFlow Base or JobFlow on an embedded server also requires a license for Productivity Package.

**These features are only available in JobFlow.*

Learning Solutions:



eLearning

- Fiery-610 PDF workflows
- Fiery-810 Fiery JobFlow



Express videos

- NEW** • Edit server defaults in Fiery Command WorkStation 6
- NEW** • Fiery Command WorkStation 6 overview
- NEW** • In-line editing in Fiery Command WorkStation 6
- Minimize print problems with PDF workflow



How-to guides

- Backup and restore Fiery JobFlow
- Configure a workflow with Fiery Preflight

- Configure Fiery JobFlow Locations
- Create a workflow using Enfocus Smart Variables
- Create a workflow using Fiery presets
- Create rules-based workflows
- NEW** • Create a workflow with approval
- Create a workflow with imposition
- Fiery JobFlow configure global notifications



Simulation learning

- NEW** • Edit defaults for color management in Fiery Command WorkStation 6
- NEW** • Edit server defaults in Fiery Command WorkStation 6



Integration

With shorter run lengths and demands for faster turnaround time, business-wide workflow automation and integration are keys to success in production environments. From order acquisition, business management and scheduling to prepress and press, EFI and Fiery JDF technology provide an unmatched digital workflow experience that improves every essential aspect of your print business processes. This technology eliminates manual, time-consuming tasks and avoids errors. The technical standard being developed by the graphic arts industry to facilitate cross-vendor workflow implementations is the Job Definition Format or JDF.

Additionally, management information systems, also known as MIS, make use of this technical standard. Other integration tools such as application programming interfaces (API's), let you develop your own applications for different platforms to retrieve data, control actions, submit or access jobs from your custom applications. Fiery is the only CIP4 certified DFE and is unique in offering a Fiery API to connect your business applications.

BUSINESS-WIDE INTEGRATION

- Configure Fiery server for JDF workflow
- Identify integration opportunities
- Understand Digital StoreFront to Fiery server integration

License(s) Required: Productivity Package (embedded Fiery Servers)

Learning Solutions:



eLearning

- Fiery-620 JDF workflows



Shop Operations

Many print shops today have a variety of different output devices from different manufacturers. For fast and efficient operations, each engine has to be part of the production process and deliver output at rated speed. Output management systems help to balance the production in the print shop by fully utilizing all engines based on their configuration and capabilities.

Business analytics tools deliver production data in real time for any device connected to the internet. Good analytic tools provide comparison reports of engines including loss of production caused by errors or paper jams. Reports of the most used media, or operator behavior show the impact on production performance. They can also help share common settings across the same devices, eliminating the need to configure them manually. Data analytics give you visibility over your print engines and other resources, increasing overall production efficiency.

UNIFIED JOB MANAGEMENT

- Create printer groups
- Fiery Central server installation
- Manage load balancing

License(s) required: Fiery Central

Learning Solutions:



eLearning

- Fiery-820 Fiery Central setup and configuration
- Fiery-830 Fiery Central workflows



How-to guides

- Install and configure Fiery Central server software
- Create printer groups on Fiery Central
- Backup and restore printer groups on Fiery Central

REMOTE PRINT QUEUE MANAGEMENT

- Fiery Go overview
- Install and use Fiery Go
- Manage Fiery Driven™ printers on Fiery Go
- Manage jobs with Fiery Go
- Prepare your Fiery system for Fiery Go

Learning Solutions:



eLearning

- NEW** • Fiery-200 Command WorkStation 6
- Fiery-200 Fiery Command WorkStation 5.8
 - Fiery-210 Fiery tools for job management



Express videos

- NEW** • Fiery Command WorkStation 6 overview
- Fiery Go Android
 - Fiery Go iPad
 - Fiery Go iPhone
- NEW** • In-line editing in Fiery Command WorkStation 6
- NEW** • Job search, filters and views in Fiery Command WorkStation 6



Simulation learning

- NEW** • Edit defaults for color management in Command WorkStation 6
- NEW** • Job search, filters and views in Fiery Command WorkStation 6

SHOP MANAGEMENT & VISIBILITY

- Configure email alerts
- Create and compare device reports
- Maintain multiple Fiery servers
- Select printers and groups
- Understand Fiery Navigator benefits

License(s) required: Fiery Navigator paid subscription required for more than three printers.

Learning Solutions:



Express videos

- Fiery Navigator-100 Overview
- Fiery Navigator-200 Dashboard
- Fiery Navigator-300 Sync
- Fiery Navigator-400 Manage
- Fiery Navigator-500 Alert



Webinars

- NEW** • Use powerful print production analytics for higher profitability



Learn By

II. LEARNING SOLUTION

Everyone learns best in a different way. Our learning environments utilize a variety of learning modalities. We are always current on emerging technologies and new learning trends and with significant experience and expertise in instruction we can support training activities anywhere in the world. Learning@EFI offers a range of solutions designed to meet the needs of our customers and partners. With three learning platforms: On-demand, Virtual classroom, and Instructor-led classrooms, we offer a wide range of learning solutions that include eLearning, Express videos, How-to guides, Simulation learning, Virtual classrooms and Webinars, and Certification programs.

CERTIFICATION
PROGRAMS

INSTRUCTOR-LED
CLASSROOM

ELEARNING

PODCASTS

EXPRESS VIDEOS

SIMULATION
LEARNING

HOW-TO-
GUIDES

VIRTUAL
CLASSROOM



The Fiery® Professional certification

The Fiery Professional Certification teaches print professionals the necessary skills to optimize the performance of EFI technology solutions. It provides the latest information on Fiery technology to develop employee skills, enhance professional development, and transform print businesses.

Why get certified?



Stand out

Differentiate yourself and stand out as a top performer. Be acknowledged as a Fiery Professional by your customers.



Move forward

Open the door to more opportunities and advancements on your career path.



Improve your business

Apply new knowledge and skills to improve productivity and business.

Your path to certification



Enroll

\$250 USD.



Prepare

Complete online learnings at your own pace with access anytime, anywhere.



Get certified

Pass an online certification exam with a score of 80% or higher. Two attempts are granted.



Maintain

Pass the annual exam to be considered "current". All annual renewal exams are FREE of charge, as long as you are "current".

Be recognized as a Fiery Certified Professional.



Certificate

Receive a custom Fiery Certified Professional certificate you can view and print.



Badge

Order your Fiery Certified Professional badge each year.



Digital Logo

Obtain a Fiery Certified Professional digital logo to include on your email signature and business cards.



The Fiery® Expert Certification

The Fiery Expert Certification builds on the Fiery Professional Certification to develop more in-depth expertise. The expert courses help students master the advanced Fiery toolsets and learn to use the full range of features.

Your path to certification



Demonstrate mastery

Acquire the skills necessary for an advanced understanding of Fiery toolsets and the full range of features.



Get recognized

Receive direct access to Fiery Technical Support. Offer new services to your customers and increase business profitability.



Validate your competency

Be acknowledged as a Fiery Expert with the highest level of in-depth knowledge and advanced proficiency.

Your path to becoming an expert.



Enroll

\$750 USD plus travel expenses..



Prerequisite

Must be Fiery Professional Certified.



Prepare

Complete 6 prerequisite online courses at your own pace with access anytime, anywhere.



Participate

Attend 2-day intensive, instructor-led classroom training at one of our EFI facilities.



Get certified

Pass an online certification exam with a score of 80% or higher. Two attempts are granted.



Maintain

Pass the annual exam to be considered "current". All annual renewal exams are FREE of charge, as long as you are "current".

Be recognized as a Fiery Certified Expert.



Certificate

Receive a Fiery Certified Expert certificate with a unique certification number..



Support

Have direct access to Fiery Technical Support.



Badge & Shirt

Order your Fiery Certified Expert badge and shirt.



Digital Logo

Obtain a Fiery Certified Expert digital logo to include on your email signature and business cards.



eLearning

Our signature eLearning courses cater to new and existing Fiery users in different roles from analysts and specialists to production sales reps and print operators. The 30-45 minute interactive learning sessions enhance your Fiery product knowledge, increase your productivity and optimize your abilities.



Fiery-100 Configuring Fiery servers

To get the most of your Fiery Driven printer, as the Fiery administrator, it is important that it is configured for optimal use for its environment. In this course, you will learn how to use the Fiery Setup Wizard to quickly configure a Fiery server for the most common printing environments. You will also learn how to further customize the server and create a recovery strategy to use in the event of a hardware failure.

Duration: 20 minutes



Fiery-101 Color management fundamentals

In order to accurately reproduce color, you need to have a firm understanding of color management. Successful color management requires a blending of science and art, with a little bit of math thrown in for good measure. In this course, you will gain an understanding of the most important terms and concepts that you need to understand in order to properly implement a color managed workflow, evaluate the results, and set expectations in order to produce color output that meets your color accuracy requirements.

Duration: 1 hour 25 minutes



Fiery-110 Print connections and utilities

To efficiently submit and manage jobs within your environment, it is important to correctly install the printer driver and other Fiery utilities. In this course, you will learn about common problems when connecting workstations to a new print server and how to install the correct Fiery tools to address your needs.

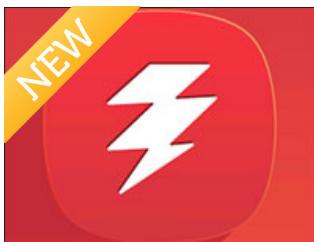
Duration: 15 minutes



Fiery-200 Command WorkStation 5.8

Fiery Command WorkStation is the single most important tool for Fiery operators and administrators to master. Command WorkStation is the gateway to Fiery features, configuration and job management. This course will introduce you to the Fiery Command WorkStation user interface.

Duration: 50 minutes



Fiery- Command WorkStation 6

The ability to effectively use Fiery Command WorkStation is essential for managing your printing environment and producing high-quality print products. In this course, we will show you (the operator) how Fiery Command WorkStation becomes your single most important tool for managing your Fiery Driven™ printers to perform your printing activities with high efficiency and meet customer deadlines.

Duration: 50 minutes



Fiery-210 Fiery tools for job management

Maximizing the productivity of your Fiery Driven printer requires mastery of Fiery Command WorkStation job management. In this course, you will get a detailed look at how to use the wide array of job submission and management tools found in Fiery Command WorkStation.

Duration: 35 minutes



Fiery-220 Creating automated workflows

Looking for ways to increase your efficiency and output production while reducing errors? Creating standardized printing workflows is a problem faced by many businesses from office to production print environments. This course will provide users and administrators the tools and skills to automate steps in your printing workflows.

Duration: 40 minutes



Fiery-300 Optimizing color and consistency

Your ability to reproduce color output consistently and accurately over time is an important factor to maintain your customers' satisfaction. The most demanding customers want both color consistency and color accuracy. In this course, you will gain the knowledge that you need to take control of your print environment and use all of the available tools in your Fiery system to achieve a high level of both color consistency and color accuracy.

Duration: 30 minutes



Fiery-310 Color workflow and setup

Establishing the proper color setup in your workflow to ensure you get the best color output is essential for your business today. Fiery Driven printers are known for providing great out-of-the-box color and includes built-in support for print industry standards. This course guides you through the Fiery color workflow and how to customize it to achieve the best color results for your documents.

Duration: 30 minutes



Fiery-320 Creating spot colors

In today's business environment, corporate branding is a critical component in communications. Accurate corporate brand identity includes specific spot colors. Fiery Driven printers with Fiery spot colors bring this level of accuracy to digital CMYK printing. This course will expose you to some of the challenges in working with spot colors from desktop applications and you will gain the knowledge necessary to achieve these colors with your Fiery Driven printer.

Duration: 30 minutes



Fiery-330 Spot color accuracy

Maintaining and managing the evolving spot color libraries are a challenge for printing environments. Spot colors are vital to corporate and brand identity in many document designs. Learn how Fiery Driven™ Printers manage spot color libraries and how to incorporate custom spot colors required in your business.

Duration: 30 minutes



Fiery-340 Color profiling

Achieving accurate and consistent color on a wide selection of media stocks is a challenge for printing workflows. In this course, you will learn how the Fiery Color Profiler Suite can overcome these challenges and take your color printing accuracy and consistency to a higher level.

Duration: 25 minutes



Fiery-400 Booklet making and imposition

Use engaging results. This introductory course on imposition will teach about common imposition issues and how Fiery imposition solutions can overcome these issues to produce professional results.

Course Duration: 30 minutes



Fiery-401 Printing business cards

Printing business cards is one of the most common uses of imposition. Creating a proper business card layout maximizes media use and minimizes finishing efforts. This course will teach you how to create and print business cards using your Fiery Driven printer.

Duration: 10 minutes



Fiery-402 Printing calendars

Calendars are used by nearly everyone and can be a fun gift which is an opportunity for you to offer value added services to your customers. There are many ways to quickly and professionally create calendars using a customer's own photos. This course will teach you how create and print personalized calendars using your Fiery Driven Printer.

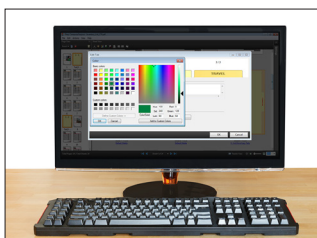
Duration: 20 minutes



Fiery-410 Digital media workflows

Professionally produced documents today often include multiple media types. Learn how to use tools in Fiery Driven printers, like paper catalogs, to efficiently and effectively manage your media stocks. You will learn how to simplify the production of documents containing more than one media type.

Duration: 30 minutes



Fiery-420 Document composition

A common problem in production level digital printing is the final printed document may be a combination of multiple documents from different sources incorporating more than one media type and tabs. Late stage changes to the document can dramatically impact production and the ability to meet deadlines. In this course, you will learn how to use the different tools and options to assemble and print complex documents.

Course duration: 40 minutes



Fiery-500 Understanding variable data printing

Personalization of documents is a key element to make your message reach its intended audience. This course will introduce you to the different variable data printing formats supported through Fiery servers. The course will teach you about simple VDP functionality, Fiery FreeForm, built into every Fiery DFE.

Course duration: 20 minutes



Fiery-510 VDP with Fiery FreeForm

This course will review different formats used with variable data printing (VDP). Learn how to use the standard VDP functionality built into every Fiery Driven printer. You will explore the use of standard Fiery variable data printing tools, Fiery FreeForm and enhanced Fiery FreeForm.

Duration: 30 minutes



Fiery-600 Fiery Graphic Arts Package, Premium Edition

Professional printers require a comprehensive set of prepress and proofing tools to achieve consistent, accurate color and the highest quality print without wasting clicks. The optional Fiery Graphic Arts Package, Premium Edition meets these requirements. This course covers the individual components included with Fiery Graphic Arts Package, Premium Edition.

Duration: 45 minutes



Fiery-610 PDF workflows

To be successful in working with PDF files, it is important to have a good working knowledge of the ways PDF files can be submitted, processed and printed. You also should be knowledgeable on common issues with PDF files and how to troubleshoot your PDF workflows when jobs do not print as expected. This course exposes you to the common problems encountered when working with PDF files. You will learn about the Fiery tools used to successfully print complex PDF files.

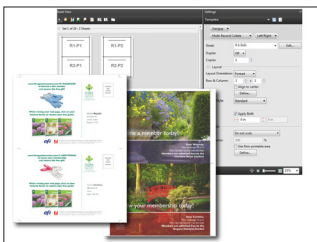
Duration: 30 minutes



Fiery-620 JDF workflows

Reduction of touch points in production printing workflows is essential to remain competitive. Automation of the workflow, from customer order acquisition through final document finishing is essential to your efficiency and profitability. This course provides an overview of integrating Fiery Driven printers into automated workflows using job definition format (JDF).

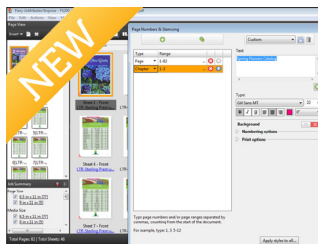
Course duration: 20 minutes



Fiery-700 Advanced imposition and VDP

One of the key ways to leverage the productivity of today's digital printers is to maximize the use of their integrated finishing capabilities. This course will help you understand how Fiery imposition solutions will help you take advantage of your digital printer and finisher investment.

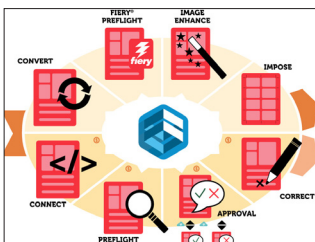
Duration: 40 minutes



Fiery-800 Fiery JobMaster

In this course, you will learn how to use Fiery JobMaster to streamline complex job assembly with unified page numbers, chapter titles, stamping, tabs, and late-stage editing to fulfill your customers' needs with the fastest turnaround times — even if they haven't prepared the files in a way you can easily use them. You will learn how Fiery JobMaster can reduce time-consuming post-printing tasks and help you add new types of products to your portfolio.

Duration: 30 minutes



Fiery-810 Fiery JobFlow

Automating job preparation steps to produce ready-to-print files with the fewest touch points and least potential for human errors is essential to maximize your printing workflow investment. In this course, you will learn about common issues surrounding printing workflows and how Fiery JobFlow can be implemented to address these issues.

Duration: 60 minutes



Fiery-820 Fiery Central setup & configuration

Fiery Central optimizes labor and engine resource utilization through enhanced visibility and control, intelligent routing of jobs and reliable error recovery. To get the most of your Fiery Central server, it is important that it is configured to fit your environment and meet your job management needs. In this course, you will learn how to install, configure and use your Fiery Central server.

Course duration: 40 minutes



Fiery-830 Fiery Central workflows

Fiery Central offers optional job imposition and composition with late-stage makeready features for complex document manufacturing needs. In this course, you will learn about Fiery Central printer group structures, and how Fiery Command WorkStation interacts with Fiery Central to load balance large jobs using multiple digital printers.

Duration: 25 minutes



Fiery-900 Advanced color profiling

Building a color workflow to achieve the next level of color quality, consistency and accuracy working with multiple color digital printing devices requires a comprehensive set of professional color tools. This course will elevate your knowledge working with the advanced tools offered in Fiery Color Profiler Suite including spot color optimization, matching to a standard, matching two printers, and profile verification.

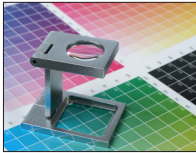
Duration: 20 minutes



Express videos

Want to learn quickly? Express videos aim to deliver content to you in small, very specific learning bursts. These are short videos on key topics delivered by EFI subject-matter experts. These are intended to help explain foundational basics and highlight new features.

Color management



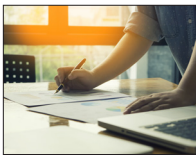
Basics of color management

Understand the fundamentals of color theory and how to set up your color management



Challenges with printing spot colors

Examine when and why spot colors need to be adjusted to be printed correctly.



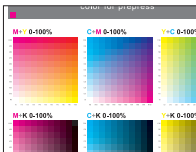
Color Profiler Suite product overview

Understand the tools that Color Profiler Suite can provide



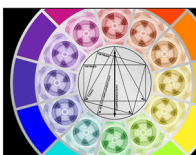
Control bar builder

Use Fiery Control Bar Builder to create custom control bars for tracking and process control.



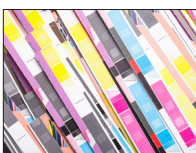
Create a custom output profile with Express Profiler

See how to create a calibration set and the associated output profile in 5 steps.



Fiery color flowchart 2016

Watch this video to understand the expert color management best practice settings for the Fiery server.



Fiery Image Enhance Visual Editor demonstration

Understand how to enhance images in a job with automated tools.



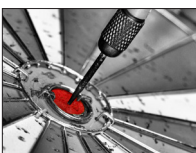
Fiery Image Enhance Visual Editor overview

Learn how Image Enhance Visual Editor, a Command WorkStation plug-in makes it easy for any operator to enhance images in a job with automated tools. Reduce your turnaround time because operators do not need to return to the originating software application to correct images.



Fiery tools for printing spot colors

Learn the spot color tools to set up and reproduce the best corporate identity colors.



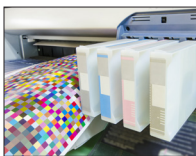
High GCR profiles with Color Profiler Suite

Learn how the Color Profiler Suite helps you to create high GCR output profiles.



How spot colors are produced

Learn what spot colors are and how they are produced.



How to create an output profile

Learn the importance of output profiles and how to create them.



How to enable black point compensation

Learn how to use the black point compensation in Color Profiler Suite.



How to enable PDF-X intent

Learn how to set up your Fiery server to honor PDF-X output intent.



How to use embedded profiles on the Fiery server

Learn how to set up your Fiery server to honor embedded profiles.



Importance of calibrating a digital print system

Understand the impact of calibration to your output quality and how to perform calibration.



Key steps for successful color management

Learn the main important color management settings.



Match press standards with Fiery servers

Use your Fiery server to print in accordance with an industry standard.



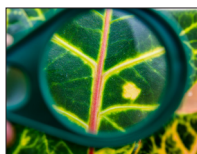
Minimize print problems with PDF workflow

Learn how a PDF workflow improves your PDF reproduction.



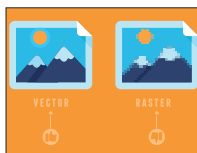
Optimizing image color

Learn how to set up the image color in your native application to be reproduced correctly.



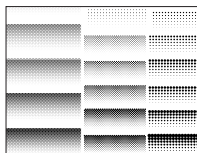
Optimizing image detail

Learn how to set up the image settings in your native application to optimize image details.



Optimizing quality of vector graphics

Learn how to set up vector graphics in your native application to achieve high output quality.



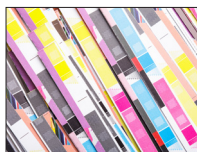
Print grayscale pages using black

Learn how to use this feature to print grayscale pages in black separation only.



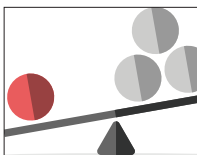
Rendering intent

Learn how the Fiery color management users rendering intents.



Tonality and color demystified

Learn the relationship between tone and color.



What is G7 calibration?

Learn about G7 calibration and how it can improve your output quality.



Color settings in Fiery Command WorkStation 6

The improved user interface presents all the color settings in one location for faster setup without having to open additional windows.

Fiery Command WorkStation



Color settings in Fiery Command WorkStation 6

The improved user interface presents all the color settings in one location for faster setup without having to open additional windows.



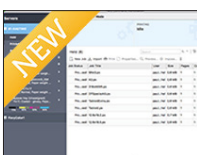
Creating filtered-view tabs

You can customize Command WorkStation views by creating filtered-view tabs, which let you quickly find, group and sort jobs in the Job Center.



Edit server defaults in Fiery Command WorkStation 6

The new and improved interface offers administrators a centralized way to define default job settings to create a uniform workflow for jobs submitted or printed on a Fiery Driven printer.



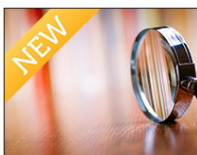
Fiery Command WorkStation 6 Product Overview

The new Fiery Command WorkStation 6 intuitive interface simplifies job management, regardless of the user's level of experience.



In-line editing in Fiery Command WorkStation 6

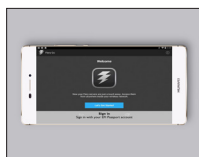
The improved Job Summary pane enables users to edit key job settings without opening Job Properties.



Job search, filters and views in Fiery Command WorkStation 6

The new user interface provides operators with flexible tools to prioritize jobs, plan print production and have more visibility and control of job management.

Fiery Go



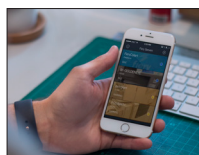
Fiery Go Android

Learn about Fiery Go and see how to use it on an Android device.



Fiery Go iPad

Learn about Fiery Go and see how to use it on an iPad.



Fiery Go iPhone

Learn about Fiery Go and see how to use it on an iPhone.

Fiery Impose



Create a best fit gangup layout

Set up jobs like business cards, postcards, tickets, and coupons in seconds and avoid tedious manual calculations.



Fiery automated workflows for business cards production

Learn how to create an automated workflow for producing business cards quickly.



Fiery Impose and Compose overview

Review how the visual interface of Fiery Impose and Fiery Compose make page layout and document composition easy



Fiery Impose templates for booklet finishing

Create a booklet layout with Fiery Impose and save the template for reuse



Fiery Impose templates for business cards demonstration

See how to create an imposition layout for business cards and save the template for reuse



Gangup automation by media size in Fiery Impose

Use Fiery Impose and Fiery Hot Folders to simplify the automation of gangup jobs.

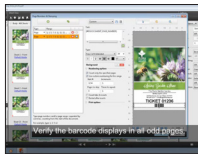
** Requires Fiery Command WorkStation 6 and Fiery Impose*



Show media color in Fiery makeready solutions

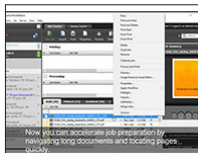
Fiery makeready solutions preview the color of media for visual confirmation with this new feature.

**Requires Fiery Command WorkStation 6 and Fiery JobMaster, Fiery Impose or Fiery Compose*



Job duplication and numbering

Learn how to replicate a page or a set of pages with ease, place a barcode in every set, and define a gangup imposition.



User defined finish size

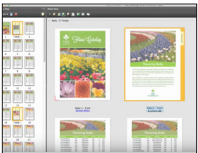
See how Fiery Impose honors the designer's intent by automatically detecting the trim and bleed boxes in a PDF.

Fiery JobMaster



Bleed-edge tabs

Produce finished tab indexed documents like books, catalogs, or manuals with Fiery JobMaster bleed edge tabs.



Fiery JobMaster auto tabs demonstration

Quickly add tabs with tab text automatically using the Auto Tabs feature.



Import scanned images in Fiery JobMaster

Import, cleanup and adjust scanned images in the makeready process to add to an existing digital document.

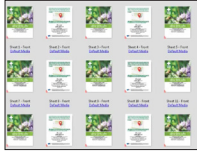
**Requires Fiery Command WorkStation 6 and Fiery JobMaster*



Image Stamping in Fiery JobMaster

Add company logos, watermarks and graphic illustrations into your documents in the makeready process.

**Requires Fiery Command WorkStation 6 and Fiery JobMaster*



Job duplication and numbering

Replicate a page or a set of pages with ease, place a barcode in every set, and define a gangup imposition.



NCR form creation

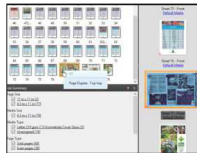
Learn how to quickly create multi-part forms and fulfill complex numbering and stamping requirements, typical in NCR form orders.



Page offset in Fiery JobMaster

Shift the page content to make room for finishing settings using this new feature in Fiery JobMaster.

**Requires Fiery Command WorkStation 6 and Fiery JobMaster*



Quick page selection

Accelerate job preparation by navigating long documents and locating pages quickly.

Fiery Navigator Express videos



Fiery Navigator Alert

Configure email alerts and receive production reports.



Fiery Navigator Dashboard

Create a customizable view of your production data and how to compare device performance.



Fiery Navigator Manage

Organize devices into groups and how to inspect device configurations.



Fiery Navigator Overview

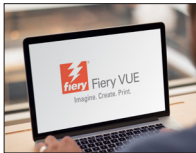
Get an overview of Fiery Navigator.



Fiery Navigator Sync

Save custom Fiery settings and share them across multiple devices.

Fiery VUE



Fiery VUE Commercial

Watch a real-world example of how Fiery VUE impacts a business and helps produce complete professional documents.



Fiery VUE Overview

Fiery VUE is a visual, interactive desktop printing application that produces professional-looking, finished print materials quickly, easily and cost-effectively.



Fiery VUE Product demonstration

Watch a live demonstration using Fiery VUE to create and produce complete professional documents.



Fiery JobMaster

Automatic tab creation

Create tab sheets, place them in the right location, and populate the tab ear content automatically by using bookmark links from PDF documents.

Language(s): EN, FR, IT, DE, ES, PL, TR, CZ, RU, NL, BP, JP, KR, SC, TC

Fiery Color
& Imaging

Convert pages to grayscale

Easily specify any page or sheet surface to print in black and white during the makeready stage.

Language(s): EN, FR, IT, DE, ES, PL, TR, CZ, RU, NL, BP, JP, KR, SC, TC

**Requires either Fiery Impose, Fiery Compose, or Fiery JobMaster*

Fiery Graphic
Arts Package,
Premium Edition

Create custom control bars for color consistency and quality control

Control Bar Builder has a WYSIWYG interface, which displays different color bars and job information. Each custom control bar can be used across all media sizes, reducing setup time and simplifying the operator's job.

Language(s): EN,

**Requires Fiery Graphic Arts Package, Premium Edition*

Fiery Command
WorkStation

Create a job error report

Feature in Command WorkStation designed for aiding communication with technical support. A customer can create an error report (zip file) with 2 or 3 clicks.

Language(s): EN

Fiery Command
WorkStation

Gangup automation by media size with Fiery Impose

Create an automated workflow for the production of gangup imposition layouts for a media size using Fiery Impose and Fiery Hot Folders.

Language(s): EN

**Requires Fiery Command WorkStation 6, Fiery Impose, and Fiery Hot Folders*



Fiery Impose

Gangup finish-edge imposition

Use Fiery Impose to create a custom imposition to print a calendar that requires gangup imposition, coil bound finishing and rotation of the back slot to show correct orientation of the finished spread.

Language(s): EN, FR, IT, DE, ES, PL, TR, CZ, RU, NL, BP, JP, KR, SC, TC

**Requires Fiery Impose*

Fiery Command
WorkStation

Job management workflow in Fiery Command WorkStation

Learn how to connect Fiery Command WorkStation to a Fiery server and efficiently manage jobs.

Language(s): EN, FR, IT, DE, ES, PL, TR, CZ, RU, NL, BP, JP, KR, SC, TC



Fiery VDP
Technology

Prepare and print a personalized newsletter using FreeForm

Utilize Fiery FreeForm technology to enable variable data printing. Master element data for a VDP job is sent to the Fiery server and rasterized separately from variable element data to reduce processing time and maximize engine utilization.

Language(s): EN, FR, IT, DE, ES, PL, TR, CZ, RU, NL, BP, JP, KR, SC, TC



Fiery VUE

Prepare and produce business documents with Fiery VUE

With Fiery VUE, the “visual print application”, you can produce professional-looking, finished print materials quickly, by publishing documents directly from Microsoft Office applications using one button.

Language(s): EN, FR, IT, DE, ES, PL, TR, CZ, RU, NL, BP, JP, KR, SC, TC

**Requires Fiery VUE*



Fiery Impose

Prepare and produce personalized booklets

Produce impactful one-to-one booklets to promote products and services by personalizing them with customer contact information and product offerings related to their personal preference. The How-to guide showcases PPML format support and Fiery Impose.

Language(s): EN, FR, IT, DE, ES, PL, TR, CZ, RU, NL, BP, JP, KR, SC, TC

**Requires Fiery Impose*



Fiery VDP
Technology

Prepare and produce personalized postcards

The production of personalized postcards with Fiery servers is as easy as producing static ones. The How-to guide showcases Fiery Impose to produce effective one-to-one communications.

Language(s): EN, FR, IT, DE, ES, PL, TR, CZ, RU, NL, BP, JP, KR, SC, TC

**Requires Fiery Impose*



Fiery JobMaster

Prepare complex long documents to print

Fiery JobMaster provides advanced document makeready including fully visual tab insertion and design; media assignment, page numbering, finishing and scanning; plus powerful late-stage editing features.

Language(s): EN, FR, IT, DE, ES, PL, TR, CZ, RU, NL, BP, JP, KR, SC, TC

**Requires Fiery JobMaster*



Fiery Impose

Prepare gangup repeat job in seconds

Set up gangup jobs like business cards, postcards, tickets, and coupons in seconds and avoid tedious manual calculations.

Language(s): EN

**Requires Fiery Impose*



Fiery JobMaster

Prepare long jobs quickly

Accelerate job preparation by navigating through documents and locating pages quickly.

Language(s): *EN*

**Requires Fiery JobMaster*



Fiery Server

Print a booklet from the driver

Produce booklets using saddle stitch imposition schemes from any application without the need for more advanced imposition programs.

Language(s): *EN, FR, IT, DE, ES, PL, TR, CZ, RU, NL, BP, JP, KR, SC, TC*



Fiery Impose

Print a booklet from Fiery Impose

Booklet imposition in Fiery Impose is a fully visual and intuitive process. It allows you to print multiple pages in a booklet style using any file format.

Language(s): *EN, FR, IT, DE, ES, PL, TR, CZ, RU, NL, BP, JP, KR, SC, TC*

**Requires Fiery Impose*



Fiery Impose

Print a calendar booklet

Produce professional looking calendars using Fiery Impose, a server-based imposition application option that streamlines and automates the imposition process, making production more efficient.

Language(s): *EN, FR, IT, DE, ES, PL, TR, CZ, RU, NL, BP, JP, KR, SC, TC*

**Requires Fiery Impose*



Fiery Impose

Print a perfect bound booklet

This binding method consists of individual leaves glued together at the spine with a flexible adhesive, which is glued along the edges of the body sheets and binds the text to a wraparound cover.

Language(s): *EN, FR, IT, DE, ES, PL, TR, CZ, RU, NL, BP, JP, KR, SC, TC*

**Requires Fiery Impose*



Fiery Impose

Print business cards

Prepare and automate the production of business cards using Fiery Impose, a server-based imposition application option that streamlines and automates the imposition process, making production more efficient.

Language(s): *EN, FR, IT, DE, ES, PL, TR, CZ, RU, NL, BP, JP, KR, SC, TC*

**Requires Fiery Impose*



Fiery JobMaster

Produce documents with bleed-edge tabs

Produce well defined sections in a long document without using tab media. Bleed-edge tabs require the finished job to be trimmed on the fore edge in order for the tab colors to show.

Language(s): EN, FR, IT, DE, ES, PL, TR, CZ, RU, NL, BP, JP, KR, SC, TC

**Requires Fiery JobMaster*



Fiery JobMaster

Produce documents with Image Stamping and watermarks with Fiery JobMaster

Quickly add missing logos and watermarks in the makeready process.

Language(s): EN

**Requires Command WorkStation 6 and Fiery JobMaster*



Fiery JobMaster

Produce documents with scanned images in Fiery JobMaster

Quickly adjust and correct scanned pages while importing into the digital file.

Language(s): EN

**Requires Fiery Command WorkStation 6 and Fiery JobMaster*



Fiery JobMaster

Produce documents with two sets of tabs

Produce a job with two different sets of tabs to better differentiate chapters from subchapters in a book.

Language(s): EN, FR, IT, DE, ES, PL, TR, CZ, RU, NL, BP, JP, KR, SC, TC

**Requires Fiery JobMaster*



Fiery Compose

Produce jobs with different finishing requirements

Use Fiery Compose or Fiery JobMaster to apply different finishing options to multiple chapters within a document. These finishing options will vary based on the in-line finisher available at the print engine.

Language(s): EN, FR, IT, DE, ES, PL, TR, CZ, RU, NL, BP, JP, KR, SC, TC

**Requires Fiery Compose or Fiery JobMaster*



Fiery JobMaster

Produce NCR forms with Fiery JobMaster

Quickly create multi-part forms and fulfill complex numbering and stamping requirements typical in NCR form orders.

Language(s): EN

**Requires Fiery JobMaster*



Fiery Server

Produce notepads

Automate the process of printing pads with minimal manual collation.

Language(s): EN, FR, IT, DE, ES, PL, TR, CZ, RU, NL, BP, JP, KR, SC, TC



Fiery JobMaster

Produce unique numbered tickets with Fiery JobMaster

Quickly produce imposed and uniquely numbered tickets by inserting a custom incremental ticket numbering and a barcode sequence at the makeready stage.

Language(s): EN

**Requires Fiery JobMaster*



Fiery Graphic Arts Package, Premium Edition

Use prepress tools at the Fiery server to troubleshoot file issues

Preflight, Postflight and ImageViewer are features included in the Fiery Graphic Arts Package, Premium Edition. Preflight evaluates print jobs for potential printing errors. Postflight is a diagnostic tool that provides global and object-specific information about how files are color managed at the Fiery server. ImageViewer is a powerful interface for soft proofing and applying last minute colors edits to jobs.

Language(s): EN, FR, IT, DE, ES, PL, TR, CZ, RU, NL, BP, JP, KR, SC, TC

**Requires Fiery Graphic Arts Package, Premium Edition*

Color management



Fiery Color Profiler Suite

Achieve accurate and consistent color with printer profiles

Create top-quality printer profiles that meet or exceed tolerances for industry certifications to achieve accurate and consistent color output.

Language(s): EN

**Requires Fiery Color Profiler Suite*



Fiery Color & Imaging

Calibrate printer with EFI ES-2000 spectrophotometer

Calibrate your Fiery Driven print engine to achieve consistent color documents. This How-to guide describes the calibration method using the ES-2000 spectrophotometer.

Language(s): EN, FR, IT, DE, ES, PL, TR, CZ, RU, NL, BP, JP, KR, SC, TC



Fiery Color & Imaging

Capture spot colors and reproduce them accurately

Use the ES-2000 spectrophotometer to capture colors from your business card and reproduce them accurately in your color documents.

Language(s): EN, FR, IT, DE, ES, PL, TR, CZ, RU, NL, BP, JP, KR, SC, TC

**Requires ES-2000*



Fiery Graphic Arts Package, Premium Edition

Create a custom control bar

Create you own control bar to ensure color consistency throughout the print run.

Language(s): EN

**Requires Fiery Graphic Arts Package Premium Edition / Fiery Productivity Package*



Fiery Color
Profiler Suite

Create a Fiery G7 calibration and profile

Create a G7 calibration and profile for Fiery Driven digital printers to comply with G7 grayscale specification.

Language(s): EN

**Requires Fiery Color Profiler Suite*



Fiery Color
Profiler Suite

Create a monitor profile

Create a monitor profile to conform to industry standards, match multiple monitors to a reference, and achieve accurate soft proofing of documents on-screen.

Language(s): EN

**Requires Fiery Color Profiler Suite*



Fiery Color
Profiler Suite

Create output profiles with Express Profiler

Create custom output profiles in five simple steps for a specific paper type and print engine with Express Profiler, a Fiery Color Profiler Suite module.

Language(s): EN

**Requires Fiery Color Profiler Suite*



Fiery Graphic
Arts Package,
Premium Edition

Enhance image quality of pictures with Fiery Image Enhance Visual Editor

Improve the output quality of amateur digital photos with Fiery Image Enhance Visual Editor and save prepress time by eliminating lengthy image editing and file manipulation tasks, to make photos look their best.

Language(s): EN, FR, IT, DE, ES, PL, TR, CZ, RU, NL, BP, JP, KR, SC, TC



Fiery Color
& Imaging

Optimize color quality of documents

Produce great color quality documents with the standard state-of-the-art Fiery color reproduction capabilities including spot colors, color substitution, auto trapping, image smoothing, spot color composite overprint, text and graphics enhancement.

Language(s): EN, FR, IT, DE, ES, PL, TR, CZ, RU, NL, BP, JP, KR, SC, TC



Fiery Color
Profiler Suite

Print or proof in accordance with industry standards

Ensure quality control and color accuracy by printing in accordance with industry standards.

Language(s): EN

**Requires Fiery Color Profiler Suite*



Fiery Color
Profiler Suite

Simulate the output of another printer for proofing

Accurately simulate the output of another device to ensure both printers deliver the same final color output to save time and resources.

Language(s): EN

**Requires Fiery Color Profiler Suite*



Fiery Color
Profiler Suite

Simulate the output of another printer for proofing

Accurately simulate the output of another device to ensure both printers deliver the same final color output to save time and resources.

Language(s): EN

**Requires Fiery Color Profiler Suite*



Fiery Color
Profiler Suite

Verify print accuracy to a standard

Verify the color accuracy of your Fiery Driven printer to press standards using Fiery Verifier.

Language(s): EN

**Requires Fiery Color Profiler Suite 4.9*

Workflow automation



Fiery Server

Automate job submission with Fiery tools

Configure a virtual printer, a job preset or a Fiery Hot Folder to set job ticket specifications, and assign imposition properties in order to automate any type of job submission process you adopt.

Language(s): EN, FR, IT, DE, ES, PL, TR, CZ, RU, NL, BP, JP, KR, SC, TC

**Requires Fiery Hot Folders*



Fiery JobFlow

Backup and restore Fiery JobFlow

Learn how to backup and restore Fiery JobFlow.

Language(s): EN

**Requires Fiery JobFlow*



Fiery JobFlow

Create rules-based workflows

Learn how to set up a rules-based workflow that preflights multiple jobs based on predefined criteria and routes them to other workflows based on their type.

Language(s): EN

**Requires Fiery JobFlow*



Fiery JobFlow

Create a workflow using Fiery presets

Learn how to eliminate repetitive setup tasks by creating a workflow that uses Fiery presets.

Language(s): EN

**Requires Fiery JobFlow*



Fiery JobFlow

Create a workflow with imposition

Learn how to automate imposition in the workflow by using Impose templates that are already created and available.

Language(s): EN

**Requires Fiery JobFlow and Impose*



Fiery JobFlow

Create a workflow with approval

Learn how to integrate the approval process as part of the workflow. Automatically send a soft proof for review and approval to both internal and external users.

Language(s): EN

**Requires Fiery JobFlow*



Fiery JobFlow

Create a workflow using Enfocus Smart Variables

Learn how to use Enfocus Smart Variables in the workflow to preflight and correct PDF files.

Language(s): EN

**Requires Fiery JobFlow*



Fiery JobFlow

Configure a workflow with Fiery Preflight

Learn how to configure a workflow with Fiery Preflight to inspect and troubleshoot the file for missing or corrupted assets.

Language(s): EN

**Requires Fiery JobFlow*



Fiery Impose

Configure Fiery JobFlow Locations

Learn how to set up and configure different input, archive and output locations, such as shared folders, FTP sites, and Dropbox accounts in Fiery JobFlow.

Language(s): EN

**Requires Fiery JobFlow*



Fiery JobFlow

Fiery JobFlow configure global notification

Learn how to configure notifications within a workflow to trigger emails based on an action and how to set up users as recipients of notifications.

Language(s): EN

**Requires Fiery JobFlow*



Fiery Hot
Folders

Merge JPEG files and print a photo booklet

Submit and merge JPEG files from the same folder and automate job settings like imposition to create a photo booklet in a few clicks.

Language(s): EN, FR, IT, DE, ES, PL, TR, CZ, RU, NL, BP, JP, KR, SC, TC

**Requires Fiery Hot Folders*

Shop operations



Fiery Central

Backup and restore printer groups on Fiery Central

Learn how to backup and restore printer groups on Fiery Central.

Language(s): EN

**Requires Fiery Central*



Fiery Central

Create printer groups on Fiery Central

Learn how to create a printer group containing multiple devices and define the default load balance settings.

Language(s): EN

**Requires Fiery Central*



Fiery Central

Install and configure Fiery Central server software

Install and configure your Fiery Central server software.

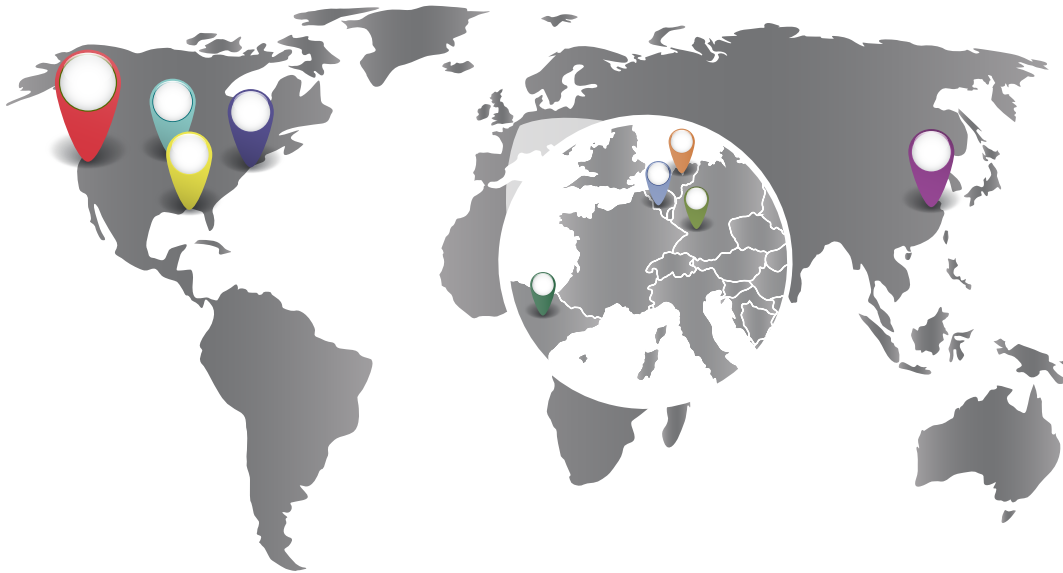
Language(s): EN

**Requires Fiery Central*



Instructor-led training

Bring your team together at one of our global training locations that works best for your organization. Led by our expert certified instructors, our face-to-face training adds a personal element to a workshop as opposed to a digital solution. Our knowledgeable instructors will work with you on targeted training that meets your needs and goals.



Our training centers

California – EFI HQ
6750 Dumbarton Circle
Fremont, CA 94555
UNITED STATES

Minnesota
1340 Corporate Center Curve
Eagan, MN 55121
UNITED STATES

Georgia
4955 Avalon Ridge Pkwy
Ste 300
Norcross, GA 30071
UNITED STATES

New Hampshire
One VUTEk Place
Meredith, NH 03253
UNITED STATES

Netherlands
Schiphol-Rijk, Tupolevlaan 65
1119 PA Schiphol-Rijk,
Amsterdam
EUROPE

Belgium
Brixtonlaan 9
1930 Zaventem
EUROPE

Germany
Kaiserswerther Str.
115D-40880 Ratingen
EUROPE

Spain
Pol. Ind. Supoi-8, Carrer del
Ibers, 54,
12550 Almassora, Castelló
EUROPE

China
601A&D, BLDG 9, MinHang Dist.,
PuJiang Hi-Tech Plaza
2388 ChenHang Road,
Shanghai 201114
ASIA



Podcasts

Podcasts are engaging audio shows on variety of topics that provide education in the form of entertainment. Our podcasts at EFI AirWaves Radio feature discussions with EFI subject matter experts and customers. You can download them on a computer or an MP3 player or you can listen to them online. Subscribe and never miss an episode.

EFI AirWaves Radio



Listen in your web browser <https://www.speaker.com/user/fieryglobaluniversity>



EFI AirWaves
on iTunes



Download
speaker app



Use your favorite Podcatcher and look for us with these hashtags:

#EFIPrint #FieryDFE #FieryGlobalU #FieryNavigator #ColorProfilerSuite

Episode 1: Fiery Navigator



Guest:
Andy Brint

Andy gives us an overview of Fiery Navigator, a service for proactive device management and analytics for Fiery Driven print operations.

#EFIprint #FieryNavigator #FieryDFE #FieryGlobalU #EFIFiery

Episode 2: EFI Color Talk



Guest:
Lou Prestia

Lou gives us an overview of "out-of-the-box" great color, color management, and EFI's color philosophy for our customers.

#EFIPrint #colormanagement #Colorprofilersuite #FieryGlobalU #FieryDFE

Episode 3: Fiery Certification



Guest:
Dan Ferrante

In this episode we discuss the benefits of Fiery Certification programs with Fiery Certified Expert Daniel Ferrante.

#CertifiedExpert #FieryDFE #CertifiedProfessional #EFI #FieryGlobalU #EFIPrint

Episode 4: EFI Tech Support



Guest:
Karl Tellefsen

Karl gives us the inside information on how to get support for Fiery products. We discuss local support, OEM support, EFI Technical support, and self-help resources.

#EFIPrint #FieryDFE #FierySupport #EFISupport #FieryGlobalU

Episode 5: EFI Color Profiler Suite



Guest:
Lou Prestia

Lou meets with us to give us the latest scoop on Fiery Color Profiler Suite, the color management software that gives integrated color management functionality and quality control.

#EFIPrint #colormanagement #Colorprofilersuite #FieryGlobalU #FieryDFE

NEW Episode 6: Fiery® JobFlow™



Guest:
Hans Sep
& Dilyana
Hadjeva

EFI's Hans and Dilyana discuss Fiery® JobFlow™ which automates job preparation steps to produce ready-to-print files.

#EFIPrint #colormanagement #Colorprofilersuite #FieryGlobalU #FieryDFE

NEW**Episode 7: Innovation impact of Fiery digital front ends**

Guest
Toby Weiss

EFI Senior Vice President and Fiery General Manager Toby Weiss shares his “from-the-top” perspective on the impact of the innovative Fiery digital front ends on the digital printing industry.

[#EFIPrint](#) [#colormanagement](#) [#Colorprofilersuite](#) [#FieryGlobalU](#) [#FieryDFE](#)

NEW**Episode 8: Fiery digital front end influence in the Asia Pacific market**

Guest
Andy Yarrow

Our guest Andy Yarrow, EFI’s Director of Asia Pacific sales, takes a look at the ever-expanding sphere of influence of the Fiery digital front end from Tokyo to China and all points in the Asia Pacific.

[#EFIPrint](#) [#colormanagement](#) [#Colorprofilersuite](#) [#FieryGlobalU](#) [#FieryDFE](#)



Simulation learning

Simulation training is essential for practicing how to perform with confidence and precision in your work environments where failure is not an option. This unique learning solution provides you with the opportunity to practice techniques and procedures in a realistic, immersive environment, leading to improved performance, confidence and a reduction in frustration or mistakes when skills are practiced in a real setting.



Best Fit Gangup Repeat

The Best Fit for Gangup Repeat feature in Fiery Impose helps you set up jobs like business cards, postcards, tickets, and coupons in seconds and avoid tedious manual calculations. This feature defines the optimum imposition layout and the number of copies to print based on parameters such as media size, and number of finished products.



Color settings in Fiery Command WorkStation 6

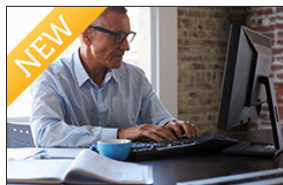
The improved user interface presents all the color settings in one location for faster setup without having to open additional windows.

Languages: EN, DE



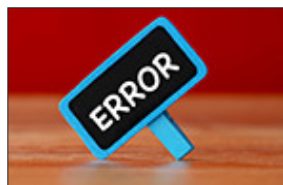
Edit defaults for color management in Fiery Command WorkStation 6

The improved default color settings interface enables administrators to create a uniform color workflow for jobs submitted or print on a Fiery Driven printer.



Edit server defaults in Fiery Command Workstation 6

The new and improved interface offers administrators a centralized way to define default job settings to create a uniform workflow for jobs submitted or printed on a Fiery Driven printer.



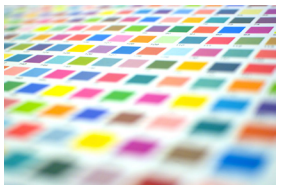
Fiery Job Error Report

Job error reports are a feature in Fiery Command WorkStation designed for aiding communication with technical support. The idea is that the customer can create an error report (zip file) with a few clicks.



Filtered-view tabs

Practice creating customized tabs filter views in Fiery Command WorkStation Job Center to find, group and sort jobs.



G7 Calibration

Practice the steps to achieve excellent gray balance for your Fiery Driven digital printers creating a G7 calibration and color profile. This simulation gives you a realistic experience creating a G7 calibration using Fiery Color Profiler Suite, even if you do not have the software. Upon completing the simulation, you will have the skills to use Fiery Color Profiler Suite to create a G7 calibration and profile for your Fiery driver printer and media.



Gangup automation by Media Size in Fiery Impose

The new Fiery Impose finish size setting, Based on Trim Box, calculates the best layout (n-up and orientation) on the fly for the desired media size. It allows users to create a single imposition template for all gangup layouts like business cards, postcards, and tickets that are printing on the same sheet size.

**Requires Fiery Command WorkStation 6 and Fiery Impose*



Image Stamping in Fiery JobMaster

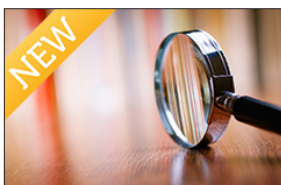
Customize a job quickly by adding missing logos and watermarks in the makeready process without the need to change the application.

**Requires Fiery Command WorkStation 6 and Fiery JobMaster*



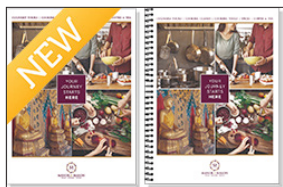
Import scanned images in Fiery JobMaster

Learn how to import and adjust scanned images to incorporate into your digital files without the need to change application.



Job search, filters and views in Fiery Command WorkStation 6

The enhanced job search functions allow users to quickly locate jobs on a Fiery server. Learn how to use flexible tools to prioritize jobs, plan print production, and have more visibility and control of job management.



Page offset in Fiery JobMaster

Practice importing and adjusting previously scanned images to incorporate into the job assembly process with enhanced clean up tools for a perfect fit in your document.

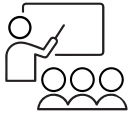
**Requires Fiery Command WorkStation 6 and Fiery JobMaster*



Show Media Color in Fiery makeready solutions

The show media color feature in Fiery makeready solutions improves page identification when you are using colored media in a long job. It allows you to simulate the media color that is assigned in a document and see it in the preview.

**Requires Fiery Command WorkStation 6 and Fiery JobMaster, Fiery Impose or Fiery Compose*



Virtual classroom/Webinars

Our virtual classrooms provide convenience and scheduling flexibility without the location or time limitations of a traditional classroom. Our customizable formats include webinars and live virtual training which enable you to balance your schedule while gaining real-world, relevant skills in a stimulating, hands-on environment. Just like in an actual classroom, you and the instructor are logged into the virtual learning environment at the same time. Get the training you and your team need—where, when and how you want it.

The **World of Fiery Webinar series** is an on-going program of educational and informative webinars that feature valuable information for color professionals, and for owners and managers of print businesses and in-plant/CRD operations. Presented by EFI Fiery experts, these easy-to-follow sessions provide actionable tips for improving productivity, quality and profitability, and best practices to reduce costs, gain new business, and more. To register for upcoming, live sessions or to access recordings of past sessions, go to webinar.efi.com/WorldofFiery.

Job management



Fiery Command WorkStation 6 - overview and new features

Learn all you need to know to transition to the new interface and discover new features that will make a big difference in your day-to-day operations.

Language(s): EN



Fiery Command WorkStation 6 - configuring color settings and best practices

Understand how to configure color settings and learn best practices for establishing new workflows to comply with color standards.

Language(s): EN



Fiery Command WorkStation 6 - new features in Fiery makeready solutions

See how the new features in Fiery Impose, Fiery JobMaster, and Fiery Compose can speed up the production of complex jobs and expand your service offerings.

Language(s): EN



Foolproof preparation of a digital print job

Learn to identify 5 frequent design challenges for document preparation of common jobs such as business cards, booklets, and catalogs.

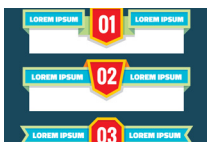
Language(s): EN



Getting the most out of your Fiery investment

Learn the basics of Fiery Command WorkStation - where to start and how to optimize your job management, including tips and resources for ensuring your success.

Language(s): EN



Take document layout to the next level

Learn how easy and fast it can be to prepare jobs to print correctly the first time while saving your customers' design time, using in-RIP prepress and makeready tools.

Language(s): EN



Recipe for VDP: A primer for creating successful campaigns

Take stress out of variable data printing with a step-by-step guide to creating powerful VDP campaigns that drive more business for your customers.

Language(s): EN, DE



Ten ways that Fiery tools make VDP easy

Discover how a Fiery digital front end reduces the stress of a VDP job production, from the simplest projects to the most complex.

Language(s): EN, ES, DE, FR



The business of VDP: How to get started and grow your profits

Learn how various technologies increase audience engagement and reach beyond the printed page, plus hear how other print service providers have successfully grown their VDP portfolios.

Language(s): EN



Tips and tricks for Command WorkStation

Get the most out of Command WorkStation and save time, increase automation and produce better color output. Learn how to master the power of Fiery servers by using Command WorkStation like a pro.

Language(s): EN

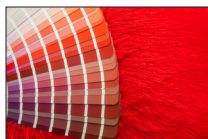


Use powerful Enfocus PitStop edit PDF tools to quickly make print ready files

Discover how to leverage Enfocus PitStop Edit, a powerful Adobe Acrobat plug-in, to enhance or fix PDF documents in the prepress department or at the digital front end. Fiery makeready applications, such as Fiery Impose, Fiery JobMaster, and Fiery Compose, include PitStop Edit.

Language(s): EN, DE, ES, FR

Color management



Learn about the challenges of spot color matching and how you can differentiate your business by creating the best possible match for your customers.

Language(s): EN, FR, DE, ES



Achieving great output quality with your paper

Get the best quality print on whatever paper you buy. Learn how to configure print settings to get the best quality on each stock and maximize productivity with automated settings.

Language(s): EN, FR, DE, ES



Advanced color management for digital print systems

Building on our other sessions on color management, this session delves deeper into color management and gives you the knowledge for getting the best reproduction of color in your production environment.

Language(s): EN



Best practices for matching industry color standards

Understand the importance of color standards, specification and methods for your business and learn how to match your printers to an industry reference or a customer press profile.

Language(s): EN



Best practices for producing outstanding image quality results

Learn how you can achieve perfect output quality for images and vectors in a high-volume production environment.

Language(s): EN, FR, DE, ES



Best practices for troubleshooting print quality problems

Learn how to use advanced Fiery graphic arts tools to quickly troubleshoot and fix common print issues right at the DFE, eliminating rework and the need to go back to prepress.

Language(s): EN



G7 calibration with Fiery Color Profiler

Learn what G7 calibration is and how to achieve better, more stable color quality.

Language(s): EN



The ABCs of producing the best match for spot colors

Learn about the challenges of spot color matching and how you can differentiate your business by creating the best possible match for your customers.

Language(s): EN, FR, DE, ES

Workflow automation



Automating job submission: 5 ways to increase your efficiency

Uncover the power of automating with Fiery Hot Folders, Virtual Printers, presets, and more. Learn how to produce jobs faster, reduce errors, and increase production output.

Language(s): EN



Learn By III. LEARNING PATH

The concept of learning paths is based on a set or sets of characteristics that match a job definition or a desired skill set. Fiery Global University has years of experience in the field training employees from small print shops to large full-production facilities. With this experience, we have created learning paths that very closely match the job definitions and skill sets found in the digital printing industry. A sales professional may wish to gain a more global view of all Fiery capabilities. A prepress operator may need more detailed instruction in the areas of color management or creating print ready files. Whatever your job description, you can customize your learning to match your current role or to expand your knowledge in new areas.



Print Service Providers

PREPRESS
OPERATOR

GRAPHIC
DESIGNER

PRESS/PRINTER
OPERATOR

OFFICE USER

PLANT/
PRODUCTION
MANAGER

Fiery Channels

ANALYST

SALES REP

PRESS/PRINTER OPERATOR



Paul

"Give me any press/printer and I can run it."

- Operates any kind of printers
- Sets up, checks and adjusts equipment based on job requirements
- Works in shifts
- Reviews job instructions to prepare jobs for printing
- Troubleshoots printer related issues
- Has less knowledge on layout application and color management

Learning Solutions:



Certification

- Fiery Professional Certification
- Fiery Expert Certification



eLearning

- NEW** • Fiery-200 Command WorkStation 6
- Fiery-200 Command WorkStation 5.8
- Fiery-210 Fiery tools for job management
- NEW** • Fiery-300 Optimizing color and consistency
- Fiery-400 Booklet making and imposition
- Fiery-410 Digital media workflows
- Fiery-420 Document composition



Express videos

- Basics of color management
- Bleed-edge tabs
- NEW** • Color settings in Fiery Command WorkStation 6
- Control bar builder
- Create a best fit gangup layout
- Creating filtered-view tabs
- NEW** • Edit server defaults in Fiery Command Workstation 6
- NEW** • Fiery automated workflows for business cards production
- NEW** • Fiery Command WorkStation 6 overview
- Fiery Impose and Compose overview
- Fiery Impose templates for booklet finishing

- Fiery Impose templates for business cards demonstration
- NEW** • Gangup automation by media size in Fiery Impose
- Image stamping in Fiery JobMaster
- Importance of calibrating a digital print system
- Import scanned images in Fiery JobMaster
- NEW** • In-line editing in Fiery Command WorkStation 6
- NEW** • Job search, filters and views in Fiery Command WorkStation 6
- Key steps for successful color management
- NEW** • Page offset in Fiery JobMaster
- NEW** • Show media color in Fiery makeready solutions
- User defined finish size



How-to guides

- Apply page offset to make room for finishing settings
- NEW** • Auto page rotation in Fiery Impose
- Calibrate printer with EFI ES-2000 spectrophotometer
- Enhance image quality of pictures with Fiery Image Enhance Visual Editor
- Gangup automation by media size in Fiery Impose
- Job management workflow in Fiery Command WorkStation
- Optimize color quality of documents

- Paper stock management with Fiery Paper Catalog
- Prepare and print a personalized newsletter using FreeForm
- Prepare and produce personalized booklets
- Prepare and produce personalized postcards
- Print a booklet from the driver
- Produce documents with image stamping and watermarks
- Produce documents with scanned images
- Produce jobs with different finishing requirements
- Use prepress tools at the Fiery server to troubleshoot file issues



Simulation learning

- NEW** • Color settings in Fiery Command WorkStation 6
- NEW** • Edit server defaults in Fiery Command WorkStation 6
- Gangup automation by Media Size in Fiery Impose
- NEW** • Image Stamping in Fiery JobMaster
- NEW** • Import scanned images in Fiery JobMaster
- NEW** • Show Media Color in Fiery makeready solutions
- Job search, Filters and views in Fiery Command WorkStation 6
- NEW** • Page offset in Fiery JobMaster



Webinars

- 3 key steps to getting the right color
- Foolproof preparation of a digital print job
- NEW** • Fiery Command WorkStation 6 - overview and new features

PREPRESS OPERATOR



Sara

"Design and proof must be 100% accurate."

- Has advanced color management skills
- Creates artwork and produces print ready files
- Creates profiles for each of the new print conditions and configurations
- Has high knowledge of the manufacturing process
- Has knowledge of desktop publishing software
- Retouches images, prepares and creates example proofs for approval

Learning Solutions:



Certification

- Fiery Professional Certification
- Fiery Expert Certification



eLearning

NEW • Fiery-101 Color management fundamentals

NEW • Fiery-200 Command WorkStation 6

• Fiery-200 Command WorkStation 5.8

• Fiery-210 Fiery tools for job management

• Fiery-220 Creating automated workflows

NEW • Fiery-300 Optimizing color and consistency

• Fiery-310 Color workflow and setup

• Fiery-320 Creating spot colors

• Fiery-330 Spot color accuracy

• Fiery-340 Color profiling

• Fiery-401 Printing business cards

• Fiery-402 Printing calendars

• Fiery-410 Digital media workflows

• Fiery-510 VDP with Fiery FreeForm

• Fiery-600 Fiery Graphic Arts Package, Premium Edition

• Fiery-610 PDF workflows

• Fiery-700 Advanced imposition and VDP

NEW • Fiery-800 Fiery JobMaster

• Fiery-900 Advanced color profiling



Express videos

NEW • Bleed-edge tabs

- Challenges with printing spot colors
- Create a best fit gangup layout

NEW • Creating filtered-view tab

NEW • Color settings in Fiery Command WorkStation 6

NEW • Edit server defaults in Fiery Command Workstation 6

- Fiery automated workflows for business cards production

NEW • Fiery Command WorkStation 6 overview

- Fiery Impose and Compose overview
- Fiery Impose templates for booklet finishing
- Fiery Impose templates for business cards demonstration

NEW • Gangup automation by media size in Fiery Impose

- How to enable Black point compensation
- How to enable PDF-X intent
- How to use embedded profiles on the Fiery server

NEW • Image stamping in Fiery JobMaster

NEW • Import scanned images in Fiery JobMaster

NEW • In-line editing in Fiery Command WorkStation 6

NEW • Job search, filters and views Fiery Command WorkStation 6

- Match press standards with Fiery servers
- Minimize print problems with PDF workflow
- Optimizing image color
- Optimizing image detail
- Optimizing quality of vector graphics

NEW • Page offset in Fiery JobMaster

- Print grayscale pages using black
- Rendering intent

NEW • Show media color in Fiery makeready solutions

- User defined finish size
- What is G7 calibration?



How-to guides

- Achieve accurate and consistent color with printer profiles
- Apply advanced page numbering
- Apply page offset to make room for finishing settings
- Apply unique ticket numbers
- Automate job submission with Fiery tools
- Automatic tab creation

NEW • Auto page rotation in Fiery Impose

- Calibrate printer with EFI ES-2000 spectrophotometer
- Capture spot colors and reproduce them accurately
- Convert pages to grayscale
- Create a monitor profile

NEW • Create custom control bars for color consistency and quality control

- Change key job settings in job summary with Inline Editing

- Enhance image quality of pictures with Fiery Image Enhance Visual Editor

NEW • Gangup automation by media size in Fiery Impose

- Gangup finish-edge imposition
- Job management workflow in Fiery Command Workstation
- Merge JPEG files and print a photo booklet
- Optimize color quality of document
- Prepare and print a personalized newsletter using FreeForm
- Prepare and produce business documents with Fiery VUE
- Prepare and produce personalized booklets
- Prepare and produce personalized postcards

NEW • Prepare complex long documents to print

- Print a booklet from Fiery Impose
- Print a calendar booklet



Webinars

- The ABCs of producing the best match for spot colors
- Use powerful Enfocus PitStop edit PDF tools to quickly print ready files

NEW • Fiery Command WorkStation 6 - configuring color settings and best practices

NEW • Fiery Command WorkStation 6 - new features in Fiery makeready solutions



Simulation learning

NEW • Color settings in Fiery Command WorkStation 6

- Create a best fit gangup layout

NEW • Edit server defaults in Fiery Command WorkStation 6

- Print business cards
- Print or proof in accordance with industry standards
- Produce documents with bleed-edge tabs
- Produce documents with two sets of tabs
- Produce NCR forms with Fiery JobMaster
- Produce documents with image stamping and watermarks
- Produce documents with scanned pages
- Simulate the output of another printer for proofing
- Show media color in Fiery makeready solutions
- Use prepress tools at the Fiery server to troubleshoot file issues

NEW • Verify print accuracy to a standard

NEW • Edit defaults for color management in Fiery Command WorkStation 6

- Fiery job error report

NEW • Filtered-view tabs

NEW • Gangup automation by Media Size in Fiery Impose

NEW • G7 calibration

NEW • Image Stamping in Fiery JobMaster

NEW • Import scanned images in Fiery JobMaster

- Job search, Filters and views in Fiery Command WorkStation 6
- Page offset tin Fiery JobMaster
- Show media color in Fiery makeready solutions

PLANT PRODUCTION MANAGER



Bill

"I know my printers better than my own children."

- Knows the capabilities of all printers
- Knows the workflows
- Makes purchase decisions for new equipment
- Manages, schedules and plans

Learning Solutions:



Certification

- Fiery Professional Certification
- Fiery Expert Certification



eLearning

- NEW** • Fiery-200 Command WorkStation 6
- Fiery-200 Command WorkStation 5.8
- Fiery-210 Fiery tools for job management
- Fiery-220 Creating automated workflows
- Fiery-620 JDF workflows
- Fiery-830 Fiery Central workflows



Express videos

- NEW** • Color settings in Fiery Command WorkStation 6
- NEW** • Edit server defaults in Fiery Command Workstation 6



How-to guides

- Fiery Go Android
- Fiery Go iPad
- Fiery Go iPhone
- Fiery Navigator Alert
- Fiery Navigator Dashboard
- Fiery Navigator Manage
- Fiery Navigator Overview
- Fiery Navigator Sync
- NEW** • Gangup automation by Media Size in Fiery Impose
- NEW** • In-line editing in Fiery Command WorkStation 6
- NEW** • Job search, Filters and views in Fiery Command WorkStation 6

- Automate job submission with Fiery tools
- Backup and restore printer groups on Fiery Central
- Create printer groups on Fiery Central
- Job management workflow in Fiery Command WorkStation



Webinars

- Automating job submission: 5 ways to increase your efficiency
- Getting the most out of your Fiery investment

NEW • Fiery Command WorkStation 6 - overview and new features



Simulation learning

- Create a best fit gangup layout
- Color Profiler Suite G7 calibration and profiling

NEW • Color settings in Fiery Command WorkStation 6

NEW • Edit defaults for color management in Fiery Command WorkStation 6

NEW • Edit server defaults in Fiery Command WorkStation 6

NEW • Gangup automation by Media Size in Fiery Impose

NEW • Fiery Command WorkStation 6 Product Overview

NEW • Job search, Filters and views in Fiery Command WorkStation 6

GRAPHIC DESIGNER



Marie

"I eat/breathe/dream design."

- Graphic design enthusiast
- Layout and design skills
- Knows how to pick spot colors but has less color management knowledge
- Scans, photographs and retouches designs

Learning Solutions:



eLearning

- NEW** • Fiery-200 Command WorkStation 6
- Fiery-200 Command WorkStation 5.8
- Fiery-210 Fiery tools for job management
- Fiery-320 Creating spot colors
- Fiery-330 Spot color accuracy
- Fiery-340 Color profiling
- Fiery-401 Printing business cards
- Fiery-402 Printing calendars
- Fiery-410 Digital media workflows
- Fiery-500 Understanding variable data printing
- Fiery-510 VDP with Fiery FreeForm
- Fiery-610 PDF workflows



Express videos

- Basics of color management
- Bleed-edge tabs
- Challenges with printing spot colors
- Change key job settings in job summary with Inline Editing
- Color settings in Fiery Command WorkStation 6
- Control bar builder
- Create a best fit gangup layout
- Fiery automated workflows for business cards production
- NEW** • Fiery Command WorkStation 6 overview
- Fiery Impose templates for booklet finishing
- Fiery Impose templates for business cards demonstration
- Gangup automation by media size in Fiery Impose
- How spot colors are produced

- NEW** • Image stamping in Fiery JobMaster
- NEW** • Import scanned images in Fiery JobMaster
- NEW** • In-line editing in Fiery Command WorkStation 6
- NEW** • Job search, filters and views in Fiery Command WorkStation 6
 - Key steps for successful color management
 - Optimizing image color
 - Optimizing image detail
 - Optimizing quality of vector graphics
- NEW** • Page offset in Fiery JobMaster
- NEW** • Show media color in Fiery makeready solutions
 - User defined finish size



How-to guides

- Apply page offset to make room for finishing settings
- Automate job submission with Fiery tools
- Capture spot colors and reproduce them accurately
- Gangup automation by media size in Fiery Impose
- Job management workflow in Fiery Command WorkStation
- Paper stock management with Fiery Paper Catalog
- Prepare and print a personalized newsletter using FreeForm
- Prepare and produce business documents with Fiery VUE
- Prepare and produce personalized booklets
- Prepare and produce personalized postcards



Simulation learning

- NEW** • Change key job settings in job summary with Inline Editing
- NEW** • Create a best fit gangup layout
- NEW** • Color settings in Fiery Command WorkStation 6
- NEW** • G7 calibration
- NEW** • Gangup automation by media size in Fiery Impose
- NEW** • Image stamping in Fiery JobMaster
- NEW** • Import scanned images in Fiery JobMaster
- NEW** • Job search, filters and views in Fiery Command WorkStation 6
- NEW** • Page offset in Fiery JobMaster
- NEW** • Show media color in Fiery makeready solutions



Webinars

- 3 key steps to getting the right color
- Best practices for producing outstanding image quality results
- Foolproof preparation of a digital print job

OFFICE USER



Max

"I always want more than I can get."

- Limited digital printing skills
- Looks for finished documents
- Mixes own documents with PDFs
- Prepares files for digital printing
- Uses Microsoft Office Suite
- Wants to print personalized documents but doesn't know how

Learning Solutions:



eLearning

- NEW** • Fiery-200 Command WorkStation 6
- Fiery-200 Command WorkStation 5.8
- Fiery-210 Fiery tools for job management
- NEW** • Fiery-300 Optimizing color and consistency
- Fiery-400 Booklet making and imposition
- Fiery-410 Digital media workflows
- Fiery-420 Document composition
- Fiery-500 Understanding variable data printing
- Fiery-700 Advanced imposition and VDP



Express videos

- Best fit gangup repeat
- Creating filtered-view tabs
- NEW** • Color settings in Fiery Command WorkStation 6
- NEW** • Fiery Command WorkStation 6 overview
- Fiery VUE Commercial
- Fiery VUE Overview
- Fiery VUE Product demonstration
- NEW** • Gangup automation by media size in Fiery Impose
- NEW** • In-line editing in Fiery Command WorkStation 6
- Importance of calibrating a digital print system
- NEW** • Image stamping in Fiery JobMaster
- NEW** • Import scanned images in Fiery JobMaster

- NEW** • Job search, filters and views in Fiery Command WorkStation 6
- NEW** • Page offset in Fiery JobMaster
- NEW** • Show media color in Fiery makeready solutions



How-to guides

- Apply page offset to make room for finishing settings
- Automate job submission with Fiery tools
- NEW** • Auto page rotation in Fiery Impose
- Calibrate printer with EFI ES-2000 spectrophotometer
- Enhance image quality of pictures with Fiery Image Enhance Visual Editor
- NEW** • Gangup automation by media size in Fiery Impose
- Job management workflow in Fiery Command WorkStation
- Merge JPEG files and print a photo booklet
- Prepare and print a personalized newsletter using FreeForm
- Prepare and produce business documents with Fiery VUE
- Prepare and produce personalized postcards
- Print a booklet from the driver
- Print business cards
- Produce documents with scanned pages
- Produce notepads
- Produce documents with Image Stamping and watermarks



Simulation learning

- Create a best fit gangup layout
- NEW** • Color settings in Fiery Command WorkStation 6
- NEW** • Inline Editing in Fiery Command WorkStation 6
- Fiery job error report
- Filtered-view tabs
- NEW** • Gangup automation by Media Size in Fiery Impose
- NEW** • Image Stamping in Fiery JobMaster; Requires Fiery Command Workstation 6
- NEW** • Import scanned images in Fiery JobMaster; Requires Fiery Command Workstation 6
- NEW** • Job search, Filters and views in Fiery Command WorkStation 6
- NEW** • Page offset in Fiery JobMaster; Requires Fiery Command Workstation 6
- NEW** • Show Media Color in Fiery makeready solutions



Webinars

- Automating job submission: 5 ways to increase your efficiency
- NEW** • Fiery Command WorkStation 6 - overview and new features

ANALYST



Alex

"Give me a problem and I will solve it."

- A neutral partner for both sides in a sales cycle
- Has color management skills
- Product knowledge in technical details
- Solution design
- Trains and educates customers
- Troubleshoots customer issues

Learning Solutions:



Certifications

- Fiery Professional Certification
- Fiery Expert Certification



eLearning

NEW • Fiery-101 Color management fundamentals

- Fiery-110 Print connections and utilities

NEW • Fiery-200 Command WorkStation 6

- Fiery-200 Command WorkStation 5.8
- Fiery-210 Fiery tools for job management
- Fiery-220 Creating automated workflows

NEW • Fiery-300 Optimizing color and consistency

- Fiery-310 Color workflow and setup
- Fiery-320 Creating spot colors
- Fiery-330 Spot color accuracy
- Fiery-340 Color profiling
- Fiery-400 Booklet making and imposition

- Fiery-401 Printing business cards
- Fiery-402 Printing calendars
- Fiery-410 Digital media workflows
- Fiery-420 Document composition
- Fiery-500 Understanding variable data printing
- Fiery-510 VDP with Fiery FreeForm
- Fiery-600 Fiery Graphic Arts Package, Premium Edition
- Fiery-610 PDF workflows
- Fiery-620 JDF workflows
- Fiery-700 Advanced imposition and VDP

NEW • Fiery-800 Fiery JobMaster

- Fiery-810 Fiery JobFlow
- Fiery-820 Fiery Central setup and configuration
- Fiery-830 Fiery Central workflows
- Fiery-900 Advanced color profiling



Express videos

- Basics of color management
- Bleed-edge tabs
- Challenges with printing spot colors
- Color Profiler suite product overview
- NEW** • Color settings in Fiery Command WorkStation 6
- Control bar builder
- Create a best fit gangup layout
- Create a custom output profile with Express Profiler
- Creating filtered-view tabs
- NEW** • Edit server defaults in Fiery Command WorkStation 6
- Fiery automated workflows for business cards production
- Fiery color flowchart 2016
- NEW** • Fiery Command WorkStation 6 overview
- Fiery Impose and Compose overview
- Fiery Impose templates for booklet finishing
- Fiery Impose templates for business cards demonstration
- Fiery Navigator Alert
- Fiery Navigator Dashboard
- Fiery Navigator Manage
- Fiery Navigator Overview
- Fiery Navigator Sync
- Fiery tools for printing Spot Colors
- NEW** • Gangup automation by media size in Fiery Impose
- High GCR profiles with Color Profiler suite
- How spot colors are produced
- How to create an output profile
- How to enable Black point compensation
- How to enable PDFX intent
- How to use embedded profiles on the Fiery
- NEW** • In-line editing in Fiery Command WorkStation 6
- NEW** • Image stamping in Fiery JobMaster
- Importance of calibrating a digital print system
- NEW** • Import scanned images in Fiery JobMaster
- NEW** • Job search, filters and views in Fiery Command WorkStation 6
- Key steps for successful color management
- Match press standards with Fiery
- Minimize print problems with PDF workflow
- Optimizing image color
- Optimizing image detail
- Optimizing quality of vector graphics
- NEW** • Page offset in Fiery JobMaster
- Print grayscale pages using Blacks
- Rendering intent
- NEW** • Show media color in Fiery makeready solutions
- Tonality and color demystified
- User defined finish size
- What is G7 calibration



How-to guides

- Achieve accurate and consistent color with printer profiles
- Apply advanced page numbering
- Apply page offset to make room for finishing settings in Fiery Command Workstation 6
- Apply unique ticket numbers
- Automate job submission with Fiery tools
- Automatic tab creation
- NEW** • Auto page rotation in Fiery Impose
- Back up and restore Fiery JobFlow
- Back up and restore printer groups on Fiery Central
- Calibrate printer with EFI ES-2000 spectrophotometer
- Capture spot colors and reproduce them accurately
- Configure Fiery JobFlow locations
- Configure Fiery Preflight
- Convert pages to grayscale
- Create a monitor profile
- Create a workflow using Enfocue Smart Variable
- Create a workflow using Fiery presets
- Create a workflow with approval
- Create a workflow with imposition
- Create custom control bars for color consistency and quality control
- Create printer groups on Fiery Central
- Create rules-based workflows
- Enhance image quality of pictures with Fiery Image Enhance Visual Editor
- Fiery JobFlow configure global notification
- Gangup automation by media size in Fiery Impose
- Gangup finish-edge imposition
- Install and configure Fiery Central server software
- Job management workflow in Fiery Command WorkStation
- Merge JPEG files and print a photo booklet
- Optimize color quality of documents
- Paper stock management with Fiery Paper Catalog
- Prepare and print a personalized newsletter using FreeForm
- Prepare and produce business documents with Fiery VUE
- Prepare and produce personalized booklets
- Prepare and produce personalized postcards
- Prepare complex long documents to print
- Print a booklet from the driver
- Print a booklet from Fiery Impose
- Print a calendar booklet
- Print a perfect bound booklet
- Print business cards
- Print or proof in accordance with industry standards
- Produce documents with image stamping and watermarks in Fiery Command Workstation 6
- Produce documents with scanned pages in Fiery Command Workstation 6
- Produce documents with bleed-edge tabs

- Produce documents with two sets of tabs
- Produce jobs with different finishing requirements
- Produce NCR forms with Fiery JobMaster
- Produce notepads

- Simulate the output of another printer for proofing
- Use prepress tools at the Fiery server to troubleshoot file issues
- Verify print accuracy to a standard



Simulation learning

- Create a best fit gangup layout

- NEW** • Color settings in Fiery Command WorkStation 6
- NEW** • Edit defaults for color management in Fiery Command WorkStation 6
- NEW** • Edit server defaults in Fiery Command WorkStation 6
- Fiery job error report
- Filtered-view tabs
- Gangup automation by media size in Fiery Impose
- NEW** • Job search, Filters and views in Fiery Command WorkStation 6
- Image Stamping in Fiery JobMaster
- Import scanned images in Fiery JobMaster
- NEW** • In-line editing in Fiery Command WorkStation 6
- NEW** • Page offset in Fiery JobMaster
- NEW** • Show media Color in Fiery makeready solutions



Webinars

- 3 key steps to getting the right color
- Automating job submission: 5 ways to increase your efficiency
- Preparing file for digital print
- The ABCs of producing the best match for spot colors
- NEW** • Fiery Command WorkStation 6 - overview and new features
- NEW** • Fiery Command WorkStation 6 - configuring color settings and best practices

SALES REP



Chris

"I will amaze every customer with our products and solutions."

- Account management
- Listens to needs and develops ideas
- Presents all document solutions to customers
- Relationship management
- Shows ROI to the customer

Learning Solutions:



Certifications

- Fiery Professional Certification
- Fiery Expert Certification



eLearning

- NEW** • Fiery-200 Command WorkStation 6
- Fiery-200 Command WorkStation 5.8
- Fiery-210 Fiery tools for job management
- Fiery-220 Creating automated workflows
- NEW** • Fiery-300 Optimizing color and consistency
- Fiery-310 Color workflow and setup
- Fiery-320 Creating spot colors
- Fiery-330 Spot color accuracy
- Fiery-340 Color profiling
- Fiery-400 Booklet making and imposition
- Fiery-401 Printing business cards
- Fiery-402 Printing calendars
- Fiery-410 Digital media workflows
- Fiery-420 Document composition
- Fiery-500 Understanding variable data printing
- Fiery-510 VDP with Fiery FreeForm
- Fiery-600 Fiery Graphic Arts Package, Premium Edition
- Fiery-610 PDF workflows
- Fiery-620 JDF workflows
- Fiery-700 Advanced imposition and VDP
- NEW** • Fiery-800 Fiery JobMaster
- Fiery-810 Fiery JobFlow
- Fiery-830 Fiery Central workflows



Express videos

- Basics of color management
- Challenges with printing spot colors
- Change key job settings in job summary with Inline Editing in
- Control bar builder
- NEW** • Color settings in Fiery Command WorkStation 6
- Create a best fit gangup layout
- Creating filtered-view tabs
- NEW** • Edit server defaults in Fiery Command WorkStation 6
- NEW** • Fiery Command WorkStation 6 overview
- Fiery automated workflows for business cards production
- Fiery Impose and Compose overview
- Fiery Impose templates for booklet finishing
- Filter view tabs
- NEW** • Gangup automation by media size in Fiery Impose
- How spot colors are produced
- NEW** • Image stamping in Fiery JobMaster
- NEW** • Import scanned images in Fiery JobMaster
- NEW** • In-line editing in Fiery Command WorkStation 6
- NEW** • Job search, filters and views in Fiery Command WorkStation 6
- Key steps for successful color management
- NEW** • Page offset tin Fiery JobMaster
- NEW** • Show media color in Fiery makeready solutions
- User defined finish size
- What is G7 calibration



How-to guides

- Achieve accurate and consistent color with printer profiles
- Apply advanced page numbering
- Apply page offset to make room for finishing settings in Fiery Command Workstation 6
- Apply unique ticket numbers
- NEW** • Auto page rotation in Fiery Impose
- Automate job submission with Fiery tools
- Automatic tab creation
- Calibrate printer with EFI ES-2000 spectrophotometer
- Capture spot colors and reproduce them accurately
- Configure Fiery JobFlow Locations
- Configure a workflow using Fiery Preflight
- Convert pages to grayscale
- Create a workflow using Enfocus Smart Variable
- Create a workflow using Fiery Presets
- Create a workflow with approval
- Create a workflow with imposition
- Enhance image quality of pictures with Fiery Image Enhance Visual Editor
- Fiery JobFlow configure global notification
- Gangup automation by media size in Fiery Impose

- Gangup finish-edge imposition
- Job management workflow in Fiery Command WorkStation
- Merge JPEG files and print a photo booklet
- Optimize color quality of documents
- Paper stock management with Fiery Paper Catalog
- Prepare and print a personalized newsletter using FreeForm
- Prepare and produce business documents with Fiery VUE
- Prepare and produce personalized booklets
- Prepare and produce personalized postcards
- Prepare complex long documents to print
- Print a booklet from the driver
- Print a booklet from Fiery Impose
- Print a calendar booklet
- Print a perfect bound booklet
- Print business cards
- Produce documents with image stamping and watermarks in Fiery Command Workstation 6
- Produce documents with scanned pages in Fiery Command Workstation 6
- Produce documents with bleed-edge tabs
- Produce documents with two sets of tabs
- Produce jobs with different finishing requirements
- Produce NCR forms with Fiery JobMaster
- Produce notepads
- Use prepress tools at the Fiery server to troubleshoot file issues



Simulation learning

- NEW** • Create a best fit gangup layout
- NEW** • Color settings in Fiery Command WorkStation 6
- NEW** • Edit defaults for color management in Fiery Command WorkStation 6
- NEW** • Edit server defaults in Fiery Command WorkStation 6
- NEW** • Fiery job error report
- NEW** • Filtered-view tabs
- NEW** • Gangup automation by media size in Fiery Impose
- NEW** • Job search, filters and views in Fiery Command WorkStation 6
- NEW** • Image stamping in Fiery JobMaster
- NEW** • Import scanned images in Fiery JobMaster
- NEW** • In-line editing in Fiery Command WorkStation 6
- NEW** • Page offset in Fiery JobMaster
- NEW** • Show media color in Fiery makeready solutions



Webinars

- 3 key steps to getting the right color
- Automating job submission: 5 ways to increase your efficiency
- Foolproof preparation of a digital print job
- The ABCs of producing the best match for spot colors



Learn By IV. PRODUCT

Fiery print servers deliver industry-leading performance, color accuracy, usability and integration to improve the quality and efficiency of digital printing. They provide a wide range of prepress and makeready products that streamline and automate print workflows to ensure the integrity of jobs before going to print to reduce errors and waste. Plus advanced color management tools help users achieve amazing, accurate, and consistent color every time. And, because Fiery products integrate with each other, they're easy to implement, deploy, and use. Users can start with the Fiery products they need and add more as their business grows, to adapt to market changes.



FIERY®
CENTRAL

FIERY
JOBFLOW™

FIERY COMMAND
WORKSTATION®

FIERY COLOR
PROFILER SUITE

FIERY
JOBMASTER™

FIERY
COMPOSE

FIERY
NAVIGATOR™

FIERY GO

FIERY
PRODUCTIVITY
PACKAGE

FIERY GRAPHIC ARTS
PACKAGE, PREMIUM
EDITION

FIERY
SPOT-ON™

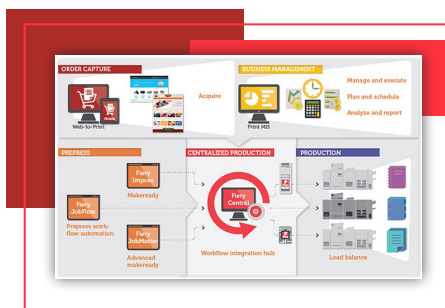
FIERY HOT FOLDERS
& VIRTUAL PRINTERS

FIERY VARIABLE
DATA PRINTING
SOLUTIONS

FIERY IMPOSE

FIERY VUE

FIERY® CENTRAL



Centralize output management of your printer fleet

Fiery Central integrates multiple Fiery Driven digital printers, and other select printers, into a unified print production system that uses common prepress tools and communicates with business management systems.

Learning Solutions:

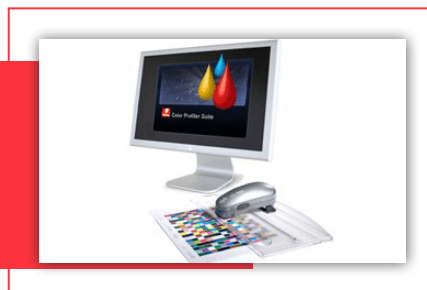
eLearning

- Fiery-820 Fiery Central setup and configuration
- Fiery-830 Fiery Central workflows

How-to guides

- Create printer groups on Fiery Central
- Backup and restore printer groups on Fiery Central
- Install and configure Fiery Central server software

FIERY COLOR PROFILER SUITE



Integrated color management software to help you produce the right color every time.

- Create, edit and maintain color profiles
- Match output across multiple printers to achieve shop-wide consistency
- Successfully match color to a color reference

Learning Solutions:

eLearning

- Fiery-340 Color profiling
- Fiery-900 Advanced color profiling

Express videos

- Color Profiler Suite overview
- High GCR profiles with Color Profiler Suite
- How to create an output profile
- Match press standards with Fiery servers

How-to guides

- Achieve accurate and consistent color with printer profiles
- Create a monitor profile
- Create output profiles with Express Profiler
- Print or proof in accordance with industry standards
- Simulate the output of another printer for proofing

NEW • Verify print accuracy to a standard

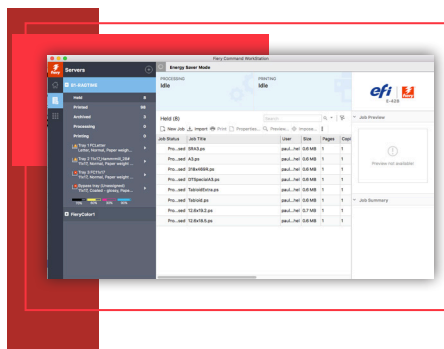
Webinars

- 3 key steps to getting the right color
- Achieving great output quality with your paper
- Advanced color management for digital print systems
- Best practices for matching industry color standards
- The ABCs of producing the best match for spot colors

Simulation learning

- G7 calibration

FIERY COMMAND WORKSTATION® 5



The most intuitive print job management interface

Centralized job management, connects to all Fiery servers on the network and improves results for increased productivity.

Learning Solutions:

eLearning

- Fiery-200 Fiery Command WorkStation 5.8
- Fiery-210 Fiery Tools for Job Management

Express videos

- Creating filtered-view tabs
- Fiery Image Enhance Visual Editor overview
- Fiery Image Enhance Visual Editor demonstration

How-to guides

- Calibrate printer with EFI ES-2000 spectrophotometer
- Capture spot colors and reproduce them accurately

NEW • Create a job error report

- Enhance image quality of pictures with Fiery Image Enhance Visual Editor
- Job management workflow in Fiery Command WorkStation
- Paper stock management with Fiery Paper Catalog
- Prepare and produce personalized postcards

Simulation learning

NEW • Filtered-View Tabs

NEW • Fiery Job Error Report

FIERY COMMAND WORKSTATION® 6



Your interface to higher productivity

Version 6 of this print job management interface for cutsheet Fiery Driven™ engines offers a new user interface to provide a more engaging and intuitive printing experience that allows users to manage print jobs faster and boost print production.

- NEW** • Job search, filters and views in Fiery Command WorkStation 6
- NEW** • Page offset in Fiery JobMaster
- NEW** • Show media color in Fiery makeready solutions

How-to Guides

- NEW** • Produce documents with Image Stamping and watermarks
- NEW** • Apply page offset to make room for finishing settings
- NEW** • Produce documents with scanned images
- Gangup automation by media size in Fiery Impose

Learning Solutions:

eLearning

- NEW** • Fiery-200 Fiery Command WorkStation 6

Express videos

- NEW** • Color settings in Fiery Command WorkStation 6
- NEW** • Edit server defaults in Fiery Command WorkStation 6
- NEW** • Fiery Command WorkStation 6 overview
- NEW** • Gangup automation by media size in Fiery Impose
- NEW** • Image stamping in Fiery JobMaster
- NEW** • Import scanned images in Fiery JobMaster
- NEW** • In-line editing in Fiery Command WorkStation 6
- NEW** • Job search, filters and views in Fiery Command WorkStation 6
- NEW** • Page offset in Fiery JobMaster
- NEW** • Show media color in Fiery makeready solutions

Simulation learning

- NEW** • Color settings in Fiery Command WorkStation 6
- NEW** • Edit defaults for color management in Fiery Command WorkStation 6
- NEW** • Edit server defaults in Fiery Command WorkStation 6
- NEW** • Gangup automation by media size in Fiery Impose
- NEW** • Image stamping in Fiery JobMaster
- NEW** • Import scanned images in Fiery JobMaster

FIERY COMPOSE



Simplify job preparation with intuitive tools

Fiery Compose provides sophisticated document composition tools and a visual user interface to speed up composition, accurately perform complex assembly functions and improved page-level settings review.

Learning Solutions:

eLearning

- Fiery-410 Digital media workflows
- Fiery-420 Document composition

Express videos

- NEW** • Fiery Impose and Compose overview
- Show media color in Fiery makeready solutions

How-to guides

- Produce jobs with different finishing requirements

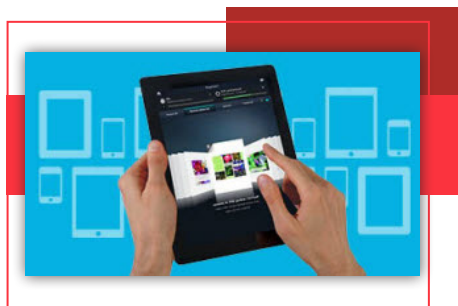
Simulation learning

- NEW** • Show media color in Fiery makeready solutions

Webinars

- Use powerful Enfocus PitStop edit PDF tools to quickly make print ready files

FIERY GO



Manage Fiery Driven printers from your iOS and Android devices

Fiery Go gives you more flexibility and allows you to multi-task for a more efficient workplace. The app is simple to use, takes just minutes to deploy and it's free. Give it a Go today!

Learning Solutions:

eLearning

- NEW** • Fiery-200 Command WorkStation 6
- Fiery-200 Command WorkStation 5.8
 - Fiery-210 Fiery tools for job management

Express videos

- Fiery Go iPhone
- Fiery Go iPad
- Fiery Go Android

FIERY GRAPHIC ARTS PACKAGE, PREMIUM EDITION



*Preview. Troubleshoot. Correct.
Delivering outstanding, high-quality
prints every time is critical to your
business success.*

The Fiery Graphic Arts Package, Premium Edition provides expert tools right on the Fiery server for soft proofing, color correction, file troubleshooting and more.

Learning Solutions:

eLearning

- Fiery-600 Fiery Graphic Arts Package, Premium Edition
- Fiery-610 PDF workflows

Express videos

- Control bar builder

How-to guides

- NEW** • Create custom control bars for color consistency and quality control
- Use prepress tools at the Fiery server to troubleshoot file issues

Webinars

- Best practices for producing outstanding image quality results
- Foolproof preparation of a digital print job

FIERY HOT FOLDERS & VIRTUAL PRINTERS



Two methods to automate error-free output

Fiery Hot Folders provide a drag-and-drop operation that can be shared with other users on the network and Virtual Printers work in environments using print drivers for printing.

Learning Solutions:

eLearning

- Fiery-220 Creating automated workflows

How-to guides

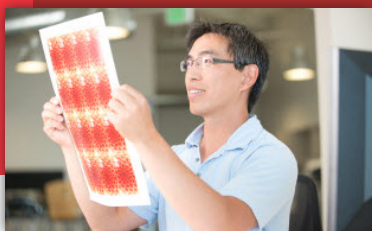
- Automate job submission with Fiery tools
- Job management workflow in Fiery Command WorkStation

Webinars

- Automating job submission: 5 ways to increase your efficiency
- Best practices for troubleshooting print quality problems
- Getting the most out of your Fiery investment



FIERY IMPOSE



*Fully visual imposition software
that automates job submission*

Boost your production efficiency with the most intuitive PDF-based imposition software on the market. Its tight integration with Fiery Command WorkStation, makeready software and prepress tools streamlines job submission.

Simulation learning

- NEW** • Best Fit gangup repeat
- NEW** • Gangup automation by media size in Fiery Impose
- NEW** • Show media color in Fiery makeready solutions

Webinars

- Foolproof preparation of a digital print job
- Take document layout to the next level
- Use powerful Enfocus PitStop Edit PDF tools to quickly make print ready files

Learning Solutions:



eLearning

- Fiery-400 Booklet making and imposition
- Fiery-401 Printing business cards
- Fiery-402 Printing calendars
- Fiery-700 Advanced imposition and VDP

Express videos

- Create a best fit gangup layout
- Fiery automated workflows for business cards production
- Fiery Impose and Compose overview
- Fiery Impose templates for booklet finishing
- Fiery Impose templates for business cards demonstration

NEW • Gangup automation by media size in Fiery Impose

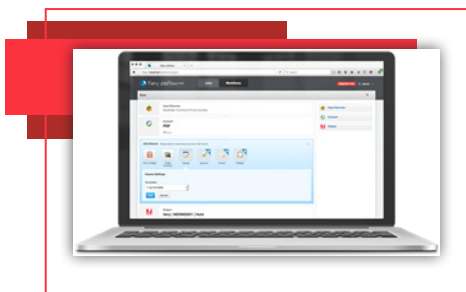
NEW • Show media color in Fiery makeready solutions

- User defined finish size

How-to guides

- NEW** • Auto page rotation in Fiery Impose
- Gangup automation by media size in Fiery Impose
- Gangup finish-edge imposition
- Prepare gangup repeat job in seconds
- Print a booklet from Fiery Impose
- Print a calendar booklet
- Print business cards

FIERY JOBFLOW™



Automate for pure profit

Fiery JobFlow automates job preparation steps to produce ready-to-print files with the fewest touch points and least potential for human errors.

Learning Solutions:

eLearning

- Fiery-810 Fiery JobFlow

How-to guides

- Configure Fiery JobFlow Locations
- Fiery JobFlow configure global notification
- Configure a workflow with Fiery Preflight
- Create a workflow using Enfocus Smart Variables
- Create rules-based workflow

FIERY JOBMASTER™



Advanced PDF-based makeready functions for more productivity

Fiery JobMaster is an intuitive job preparation solution that includes media assignment, chapter definition, advanced page numbering and stamping, fully visual tab insertion and design, finishing, scanning, and powerful late-stage editing features..

Learning Solutions:

eLearning

- Fiery-410 Digital media workflows

NEW • Fiery-800 Fiery JobMaster

Express Videos

NEW • Bleed-edge tabs

- Fiery JobMaster auto tabs demonstration

NEW • Image stamping in Fiery JobMaster

NEW • Import scanned images in Fiery JobMaster

- Job duplication and numbering
- NCR form creation

NEW • Page offset in Fiery JobMaster

- Quick page selection

NEW • Show media color in Fiery makeready solutions

How-to guides

- Apply advanced page numbering

NEW • Apply page offset to make room for finishing settings in Fiery

- Apply unique ticket numbers
- Automatic tab creation
- Convert pages to grayscale
- Prepare complex long documents to print
- Produce documents with bleed-edge tabs
- Produce documents with two sets of tabs
- Prepare long jobs quickly
- Produce jobs with different finishing requirements
- Produce unique numbered tickets with Fiery JobMaster

NEW • Produce NCR forms with Fiery JobMaster

NEW • Produce documents with image stamping and watermarks in Fiery Command Workstation 6

NEW • Produce documents with scanned images in Fiery Command Workstation 6

Simulation learning

NEW • Image stamping in Fiery JobMaster

NEW • Import scanned images in Fiery JobMaster

NEW • Page offset in Fiery JobMaster

NEW • Show media color in Fiery makeready solutions

Webinars

- Take document layout to the next level
- Use powerful Enfocus PitStop Edit PDF tools to quickly make print ready files

FIERY NAVIGATOR™



Actionable data for proactive control

Gain full visibility into your print operation with insightful data to understand production trends, standardize operating procedures, and maximize equipment usage for higher profitability and efficiency.

Learning Solutions:

Express videos

- Overview
- Dashboard
- Manage
- Alert
- Sync

FIERY PRODUCTIVITY PACKAGE



Tools for high productivity and output quality

The Fiery Productivity Package for Fiery embedded servers includes a set of features essential for professional printing environments.

Learning Solutions:

eLearning

- Fiery-210 Fiery tools for job management
- Fiery-220 Creating automated workflows
- Fiery-320 Creating spot colors
- Fiery-330 Spot color accuracy

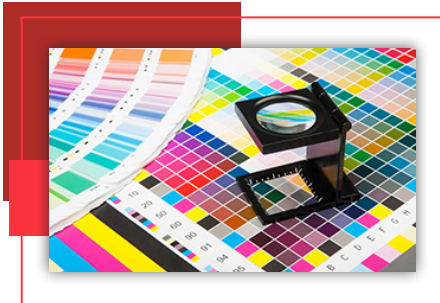
How-to guides

- Automate job submission with Fiery tools
- NEW** • Capture spot colors and reproduce them accurately
- Create custom control bars for color consistency and quality control
- Enhance image quality of pictures with Fiery Image Enhance Visual Editor
- Job management workflow in Fiery Command WorkStation
- Use prepress tools at the Fiery server to troubleshoot file issue

Webinars

- Automating job submission: 5 ways to increase your efficiency
- Getting the most out of your Fiery investment

FIERY SPOT-ON™



Fiery Spot-On™ is used to manage specific spot color libraries such as PANTONE®, HKS, TOYO and DIC to provide precise brand color matching. It can also be used to create and edit custom spot colors. A graphical user interface helps to zero-in on the CMYK toner equivalents needed to create or edit a desired spot color on a given printer

Learning Solutions:

eLearning

- Fiery-320 Creating spot colors
- Fiery-330 Spot color accuracy

Express videos

- Challenges with printing spot colors
- How spot colors are produced

How-to guides

- Capture spot colors and reproduce them accurately

Webinars

- 3 key steps to getting the right color
- Best practices for troubleshooting print quality problems
- The ABCs of producing the best match for spot colors

FIERY VARIABLE DATA PRINTING SOLUTIONS



Get the power of personalization

Fiery technology delivers powerful, industry-leading variable data capabilities that easily fit into any workflow. Whether you're a VDP novice or veteran, the flexibility and scalability of Fiery VDP technology allows you to easily produce customized marketing campaigns that expand your portfolio and revenue stream.

Learning Solutions:

eLearning

- Fiery-400 Booklet making and imposition
- Fiery-500 Understanding variable data printing
- Fiery-510 VDP with Fiery FreeForm
- Fiery-700 Advanced imposition and VDP

How-to guides

- Prepare and produce personalized postcards
- Prepare and print a personalized newsletter using FreeForm
- Prepare and produce personalized booklets

Webinars

- Recipe for VDP: A primer for creating successful campaigns
- Ten ways that Fiery tools make VDP easy
- The business of VDP: How to get started and grow your profits

FIERY VUE



Imagine. Create. Print.

Fiery VUE is a visual, interactive Windows application that produces professional-looking, finished print materials quickly, easily and cost-effectively.

Fiery VUE allows you to import multiple documents into one place, combine and reorder pages, customize layouts and add the finishing touches to your final output.

Learning Solutions:

How-to guides

- Prepare and produce business documents with Fiery VUE

Express videos

- Fiery VUE Overview
- Fiery VUE Commercial
- Fiery VUE Product demonstration



EFI fuels success.

We develop breakthrough technologies for the manufacturing of signage, packaging, textiles, ceramic tiles, and personalized documents, with a wide range of printers, inks, digital front ends, and a comprehensive business and production workflow suite that transforms and streamlines the entire production process, increasing your competitiveness and boosting productivity. Visit www.efi.com or call 650-357-3500 for more information.



Nothing herein should be construed as a warranty in addition to the express warranty statement provided with EFI products and services.

The APPS logo, AutoCal, Auto-Count, Balance, BESTColor, BioVu, BioWare, ColorPASS, Colorproof, ColorWise, Command WorkStation, CopyNet, Cretachrom, Cretaprint, the Cretaprint logo, Cretaprinter, Cretaroller, Digital StoreFront, DirectSmile, DocBuilder, DocBuilder Pro, DockNet, DocStream, DSFdesign Studio, Dynamic Wedge, EDOX, EFI, the EFI logo, ElectronicsFor Imaging, Entrac, EPCount, EPPhoto, EPRegister, EPStatus, Estimate, ExpressPay, FabriVU, Fast-4, Fiery, the Fiery logo, Fiery Driven, the Fiery Driven logo, Fiery JobFlow, Fiery JobMaster, Fiery Link, Fiery Navigator, Fiery Prints, the Fiery Prints logo, Fiery Spark, FreeForm, Hagen, Inktensity, Inkware, Jetrion, the Jetrion logo, LapNet, Logic, Metrix, MicroPress, MiniNet, Monarch, OneFlow, Pace, Pecas, Pecas Vision, PhotoXposure, PressVu, Printcafe, PrinterSite, PrintFlow, PrintMe, the PrintMe logo, PrintSmith, PrintSmith Site, PrintStream, Print to Win, Prograph, PSI, PSI Flexo, Radius, Remoteproof, RIPChips, RIP-While-Print, Screenproof, SendMe, Sincolor, Splash, Spot-On, TrackNet, UltraPress, UltraTex, UltraVu, UV Series 50, VisualCal, VUTEk, the VUTEk logo, and WebTools are trademarks of Electronics For Imaging, Inc. and/or its wholly owned subsidiaries in the U.S. and/or certain other countries.

All other terms and product names may be trademarks or registered trademarks of their respective owners, and are hereby acknowledged.

© 2017 ELECTRONICS FOR IMAGING, INC. ALL RIGHTS RESERVED. | WWW.EFI.COM

Fi009.27.16_US

Questions?



learning.efi.com



learning@efi.com

